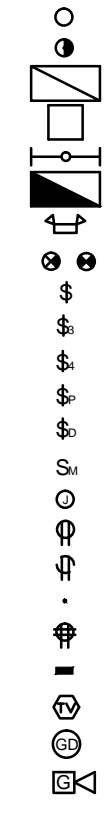


ELECTRICAL NOTES

- DO NOT SCALE DRAWINGS. REFER TO ARCHITECTURAL DRAWINGS AND REFLECTED CEILING PLAN FOR EXACT LOCATIONS OF DOORS, WINDOWS AND CEILING DEVICES. PROJECT IS A NEW STRUCTURE. VERIFY EXISTING CONDITIONS PRIOR TO PERFORMING WORK.
- DAMAGE TO STRUCTURE BEYOND CUTTING AND PATCHING FOR WORK INDICATED WILL BE REPAIRED TO EXISTING CONDITION AT CONTRACTOR'S EXPENSE.
- ALL ELECTRICAL WORK SHALL BE INSTALLED IN ACCORDANCE WITH THE NATIONAL ELECTRICAL CODE IN FORCE AT TIME OF BID AND ALL GOVERNING LOCAL CODES OR ORDINANCES.
- ALL MATERIALS SHALL BE NEW AND SHALL BE UNDERWRITER'S LABORATORIES APPROVED.
- COORDINATE ALL CIRCUITING REQUIREMENTS WITH OTHER DISCIPLINES. REVIEW ALL DIVISIONS AND SECTIONS FOR ADDITIONAL REQUIREMENTS OR COORDINATION.
- UNLESS OTHERWISE NOTED ON THE PLANS, ALL WALL-MOUNTED OUTLETS SHALL BE MOUNTED 15" ABOVE FINISHED FLOOR TO OUTLET BOTTOM. ALL COVER PLATES FOR ELECTRICAL AND TELEPHONE OUTLETS SHALL BE IVORY, UNLESS OTHERWISE NOTED ON THE DRAWINGS.
- PULL LINES SHALL BE INSTALLED IN EMPTY TELEPHONE CONDUIT AND RACEWAYS CONDUITS SHALL BE 3/4" MINIMUM AND TERMINATED ABOVE CEILING WITH INSULATED BUSHINGS.
- ALL CONDUCTORS SHALL BE COPPER AND COLOR CODED IN ACCORDANCE WITH NEC. UNLESS SPECIFICALLY INDICATED OTHERWISE.
- EXTERIOR LIGHTING CONDUCTORS SHALL BE MINIMUM #8 AWG.
- FURNISH AND INSTALL "GROUNDING" IN ACCORDANCE WITH NEC ARTICLE 250.

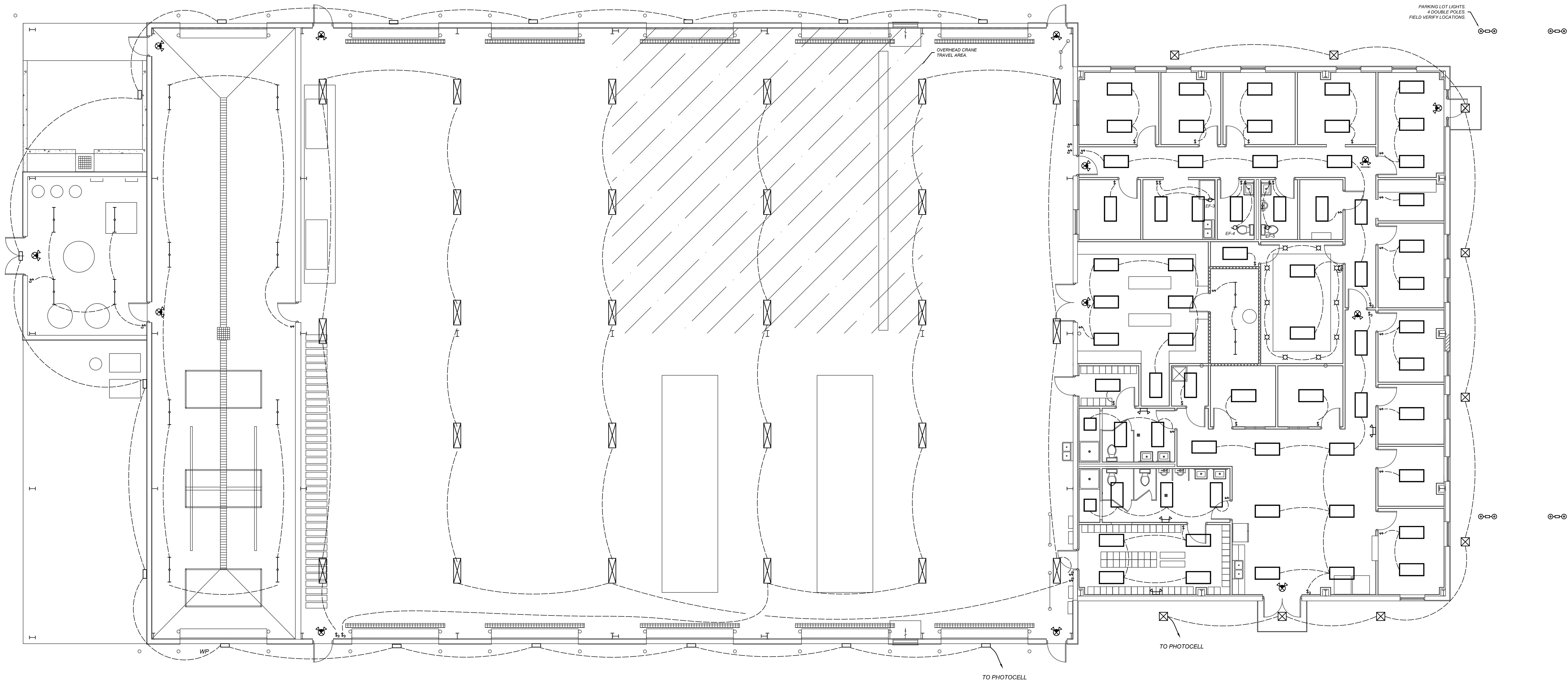


ELECTRICAL SYMBOLS LEGEND

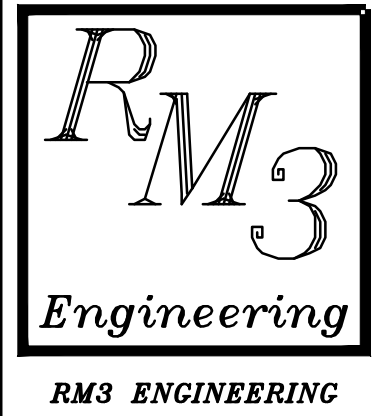
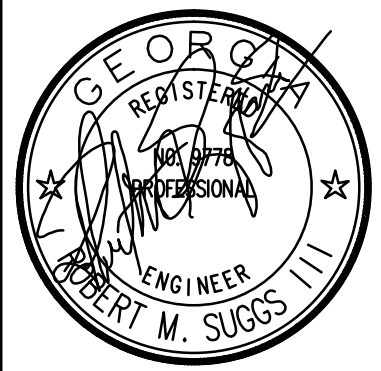
- | | |
|--|--|
| RECESSED DOWNLIGHT | 220V OUTLET |
| RECESSED WALLWASH | SMOKE DETECTOR |
| RECESSED 2 x 4 LIGHTING FIXTURE | FLOOR OR CEILING MOUNTED RECEPTACLE |
| RECESSED 2 x 2 LIGHTING FIXTURE | COMPUTER OUTLET |
| FLUORESCENT STRIP FIXTURE | FLOOR MOUNTED TELEPHONE OUTLET |
| EMERG. LTG. FIXT. - REC. MTD. W/ BAT. PACK | J-BOX AND 1" CONDUIT TO ABOVE CEILING |
| EMERG. LTG. FIXT. - WALL MTD. W/ BAT. PACK | WALL MOUNTED TELE/DATA OUTLET, PROVIDE DISCONNECT SWITCH |
| EXIT SIGN | DISCONNECT SWITCH |
| TOGGLE SWITCH | PANELBOARD |
| 3-WAY SWITCH | TELEPHONE BACKBOARD |
| 4-WAY SWITCH | MOTOR |
| SWITCH WITH PILOT LIGHT | GFI RECEPTACLE |
| DIMMER SWITCH | FLOOR MOUNTED COMPUTER OUTLET |
| MOTOR RATED SWITCH | EXPOSED CONDUIT |
| JUNCTION BOX | GROUND CONNECTION AS NOTED |
| DUPLEX RECEPTACLE | TRANSFORMER |
| EXISTING DUPLEX RECEPTACLE | MANUAL FIRE ALARM PULL STATION |
| MOUNTED ABOVE COUNTER OR 42" AFF | WALL MOUNTED FIRE ALARM SIGNAL |
| DOUBLE DUPLEX RECEPTACLE | WEATHERPROOF |
| FIRE ALARM CONTROL PANEL | ABOVE FINISHED FLOOR |
| CABLE TV OUTLET | GROUND FAULT INTERRUPTING |
| GAS DETECTOR | CEILING MOUNTED |
| WALL MOUNTED GAS HORN/STROBE | |

LIGHTING FIXTURE SCHEDULE

| SYMBOL | DESCRIPTION | LAMPS | MODEL |
|----------|--------------------------------|-------|---|
| [Symbol] | 2' x4' LAY-IN LED TROFFER | LED | LSI LPE24-HO-NW-UE |
| [Symbol] | 2' x2' LAY-IN LED TROFFER | LED | LSI LPE22-HO-NW-UE |
| [Symbol] | LINEAR HIGH BAY | LED | LSI LHB11-LED=30L-S-UNV-50-ELDS |
| [Symbol] | LED CANOPY LIGHTS | LED | LSI XSPS-S-LED-SS-CW-120-GWT-DFL |
| [Symbol] | WALL PACK | LED | LSI TMWP-64W-45K-BZ |
| [Symbol] | LINEAR FLUORESCENT SHOP LGHT | LED | LSI EG3-8-S-LED-HO-50-UNV |
| [Symbol] | RECESSED CAN LIGHTS | LED | LSI LCD6-41-LED-40-52-UE-TR6B-SF-HAZ-WH |
| [Symbol] | EMERGENCY LIGHT W/BATTERY PACK | LED | LSI LTEM-WH2 |
| [Symbol] | EXIT SIGN W/EMERGENCY LIGHT | LED | LSI LPRX-R-U-WH-LD11-R |



1 LIGHTING PLAN
E1 1/8"=1'



2302 Brockett Road
Tucker, Georgia
30084
770 934 0944
770 934 0945

LIGHTING PLAN

WASTE MANAGEMENT HAULING FACILITY
HIGHWAY 17
HARDEEVILLE, SC

| NO. | REVISIONS |
|-----|-----------|
| | |
| | |
| | |
| | |
| | |
| | |
| | |
| | |
| | |
| | |

DATE: 11/1/2017
PROJECT No. 3E17-068

SHEET NO. **E1**