

2302 Brockett Road
Tucker, Georgia
30084
770 934 0944
770 934 0945

PANELBOARDS
ONE-LINE DIAGRAMS

WASTE MANAGEMENT
HAULING FACILITY
HIGHWAY 17
HARDEEVILLE, SC

NO.	REVISIONS

DATE: 11/1/2017
PROJECT No. 3E17-068

SHEET NO.

E3

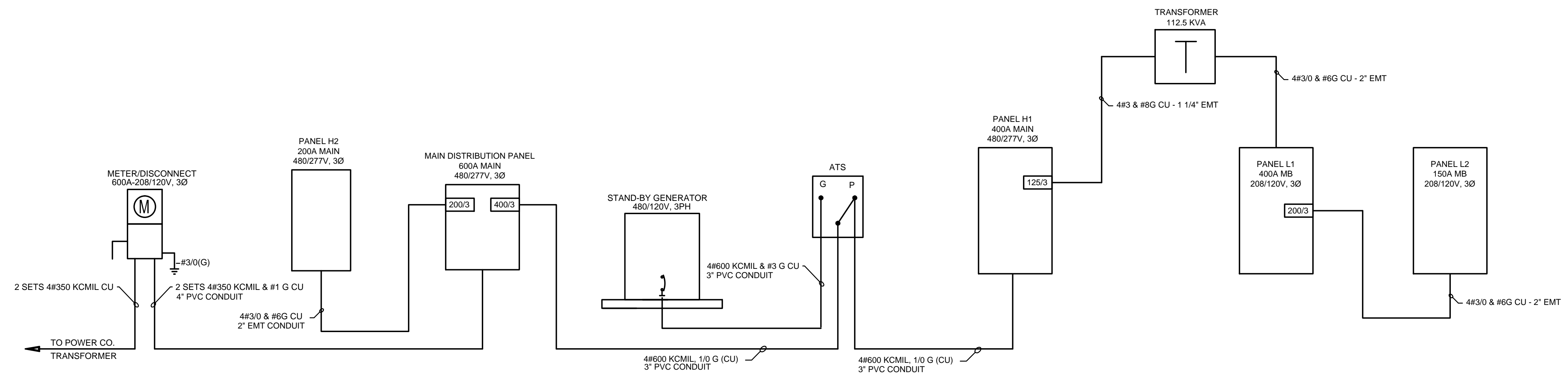
PANEL MDP									
MAIN MB		LOCATION: SHOP AREA				FAULT			
AMPS: 600A		VOLTAGE: 480/277V, 3Ø				AIC RATING: 22K			
CIR	DESCRIPTION	BRKR	PHASE A	PHASE B	PHASE C	BRKR	DESCRIPTION	CIR	
1			71.3	45.0				2	
3	PANEL H1	400/3		71.3	45.0			4	PANEL H2
5					71.3	45.0		6	
7								8	
9								10	
11								12	
13								14	
15								16	
17								18	
TOTALS:			116.3	116.3	116.3				
CONNECTED LOAD: 348.9 KVA		DEMAND LOAD 348.9 KVA				419.9 AMPS			

PANEL H1									
MAIN MB		LOCATION: SHOP AREA				FAULT			
AMPS: 400A		VOLTAGE: 480/277V, 3Ø				AIC RATING: 22K			
CIR	DESCRIPTION	BRKR	PHASE A	PHASE B	PHASE C	BRKR	DESCRIPTION	CIR	
1			4.0	37.5				2	
3	COMPRESSOR	30/3		4.0	37.5			4	TRANSFORMER
5					4.0	37.5		6	
7			4.0	10.0				8	
9	COMPRESSOR	30/3		4.0	10.0			10	CRANE
11					4.0	10.0		12	
13	LIGHTING	20/1	2.0	10.0				14	
15	LIGHTING	20/1		2.0	10.0			16	TRUCK LIFTS
17	LIGHTING	20/1			2.0	10.0		18	
19	LIGHTING	20/1	2.0	2.0				20	
21	LIGHTING	20/1		2.0	2.0			22	LIFT STATION
23	LIGHTING	20/1			2.0	2.0		24	
25	PARKING LDT LIGHTS	20/1						26	
27	PARKING LDT LIGHTS	20/1						28	
29								30	
31								32	
33								34	
35								36	
37								38	
39								40	
41								42	
TOTALS:			71.5	71.5	71.5				
CONNECTED LOAD: 214.5 KVA		DEMAND LOAD 214.5 KVA				258.1 AMPS			

PANEL H2									
MAIN MB		LOCATION: CARWASH				FAULT			
AMPS: 200A		VOLTAGE: 480/277V, 3Ø				AIC RATING: 22K			
CIR	DESCRIPTION	BRKR	PHASE A	PHASE B	PHASE C	BRKR	DESCRIPTION	CIR	
1			3.0					2	
3	RADIANT HEATER	20/2		3.0				4	
5								6	
7								8	
9								10	
11								12	
13								14	
15								16	
17								18	
19								20	
21								22	
23								24	
25								26	
27								28	
29								30	
31								32	
33								34	
35								36	
37								38	
39								40	
41								42	
TOTALS:			3.0	3.0	###				
CONNECTED LOAD: 6.0 KVA		DEMAND LOAD 6.0 KVA				7.2 AMPS			

PANEL L1									
MAIN MB		LOCATION: SHOP AREA				FAULT			
AMPS: 400A		VOLTAGE: 208/120V, 3Ø				AIC RATING: 22K			
CIR	DESCRIPTION	BRKR	PHASE A	PHASE B	PHASE C	BRKR	DESCRIPTION	CIR	
1	RECEPTACLES	20/1	1.6	1.0			20/1	FCU-1	2
3	RECEPTACLES	20/1		1.6	1.0		20/1	FCU-2	4
5	RECEPTACLES	20/1			1.6	1.0	20/1	FCU-3	6
7	RECEPTACLES	20/1	1.6	2.6					8
9	RECEPTACLES	20/1		1.6	2.6		45/2	CU-1	10
11	RECEPTACLES	20/1			1.6	2.6	60/2	CU-2	12
13	RECEPTACLES	20/1	1.6	2.6					14
15	RECEPTACLES	20/1		1.6	2.1		60/2	CU-3	16
17	RECEPTACLES	20/1			1.6	2.1			18
19	RECEPTACLES	20/1	1.6	0.6			15/2	MS-1	20
21	REFRIGERATOR	20/1		1.6	0.6				22
23	GFI RECEPTACLES	20/1			1.6	0.5	20/2	ERV	24
25	RECEPTACLES	20/1	1.6	0.6					26
27	RECEPTACLES	20/1		1.6	1.6		20/1	RECEPTACLES	28
29	RECEPTACLES	20/1			1.6	1.6	20/1	GFI RECEPTACLES	30
31	RECEPTACLES	20/1	1.6						32
33	GFI RECEPTACLES	20/1		1.6					34
35	RECEPTACLES	20/1			1.6				36
37	RECEPTACLES	20/1	1.6	15.0					38
39	GFI RECEPTACLES	20/1		1.6	15.0		120/3	PANEL L2	40
41	VENDING MACHINES	20/1			1.6	15.0			42
TOTALS:			33.6	34.1	34.0				
CONNECTED LOAD: 101.7 KVA		DEMAND LOAD 86.4 KVA				240.1 AMPS			

PANEL L2									
MAIN MB		LOCATION: SHOP AREA				FAULT			
AMPS: 150A		VOLTAGE: 208/120V, 3Ø				AIC RATING: 22K			
CIR	DESCRIPTION	BRKR	PHASE A	PHASE B	PHASE C	BRKR	DESCRIPTION	CIR	
1	RECEPTACLES	20/1	1.6	1.0				2	
3	RECEPTACLES	20/1		1.6	1.0		15/3	EF-1	4
5	RECEPTACLES	20/1			1.6	1.0			6
7	RECEPTACLES	20/1	1.6	1.0				8	
9	GFI RECEPTACLES	20/1		1.6	1.0		15/3	EF-2	10
11	METHANE DETECTOR	20/1			1.6	1.0			12
13			0.8	1.0			20/1	IR HEATERS	14
15	EF-6	15/3		0.8	1.0		20/1	IR HEATERS	16
17					0.8	1.0	20/1	IR HEATERS	18
19	PRESSURE WASHER	30/2	2.0	1.0			15/2	OIL PUMP	20
21				2.0	1.0				22
23	RECYCLE PUMP	20/1			1.0	1.0	20/1	DOOR OPENER	24
25				1.0			20/1	DOOR OPENER	26
27					1.0		20/1	DOOR OPENER	28
29						1.0	20/1	DOOR OPENER	30
31							20/1	DOOR OPENER	32
33							20/1	DOOR OPENER	34
35									36
37									38
39									40
41						1.0	20/1	BATTERY GENERATOR	42
TOTALS:			11.0	11.0	11.0				
CONNECTED LOAD: 33.0 KVA		DEMAND LOAD 33.0 KVA				91.7 AMPS			



1 ONE-LINE DIAGRAM
E3 N.T.S