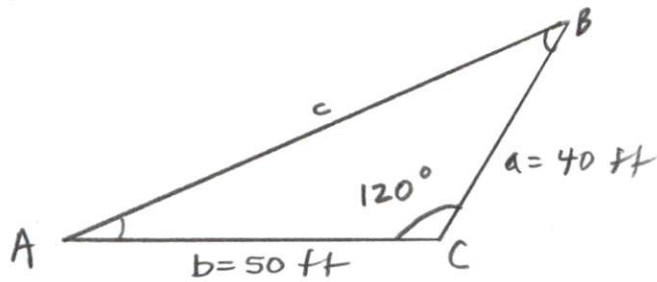


NAME: _____

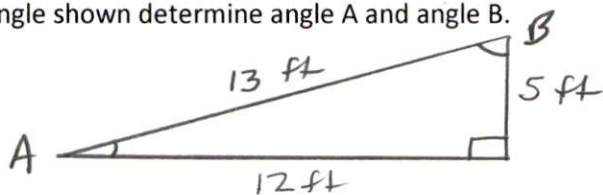
1. Solve the given equation for the unknown variable.

$$\frac{\sin A}{15} = \frac{\sin 30^\circ}{45}$$

2. Determine the length of the unknown side (c) and Angle A and angle B for the oblique triangle.



3. For the right triangle shown determine angle A and angle B.



4. Solve the system of linear equations shown using the Method of Elimination by Substitution, The Method of Elimination by Addition or Subtraction, or Cramer's Rule.

$$\begin{aligned} -5x + y &= -3 & (1) \\ 3x - 8y &= 24 & (2) \end{aligned}$$