

## Accubid Activity #11

### Accubid Office Building – SYS 16 CABLE TRAY & SYS 19 TELE/DATA CONDUIT

#### SYS 16 Cable Tray

##### Procedure

1. Start the program Accubid Pro 13.0. [Start, All Programs, Trimble, Classic 13, Accubid Pro 13]
2. Press the CAPS LOCK Key ON
3. From the Job Schedule Screen open the file, Accubid Office Building.
4. If not already selected, select the Takeoff tab at the bottom of the screen.
5. Make sure that the **L100 v8 us neca imp** is the currently selected database. If not, switch to it by clicking on the Database menu and choosing the Select command.
6. Obtain the SYS 16 CABLE TRAY Takeoff Sheet
7. Create the Typical for the Phase Breakdown Label, FLOORS 1 to 4 TRAY, as shown in Figure 1.

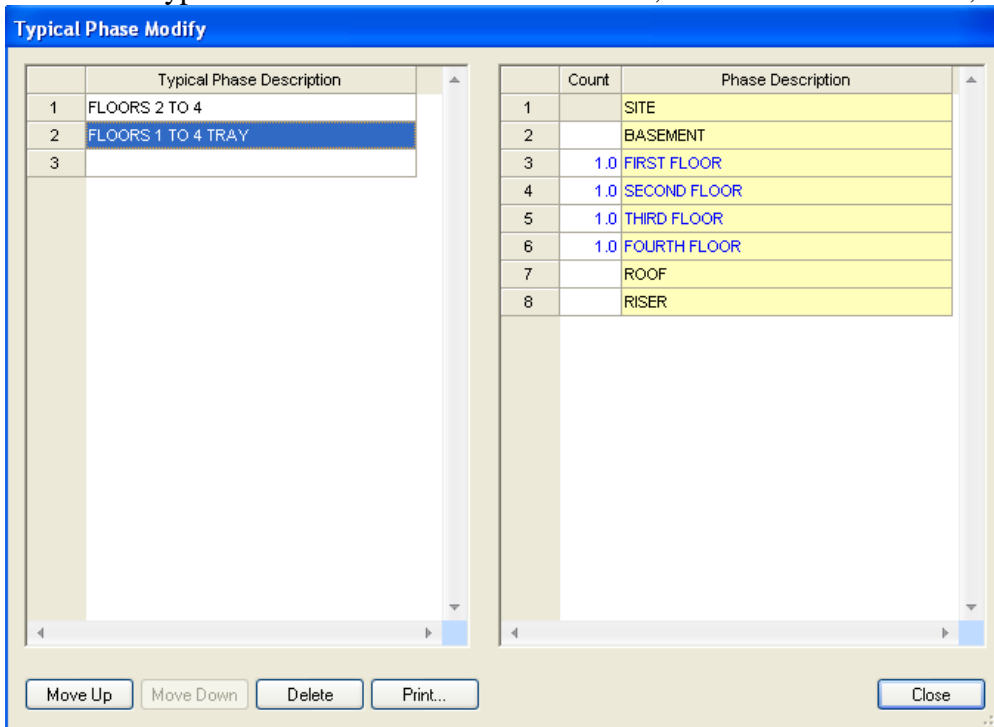


Figure 1

8. Set the breakdown labels as shown in Figure 2.

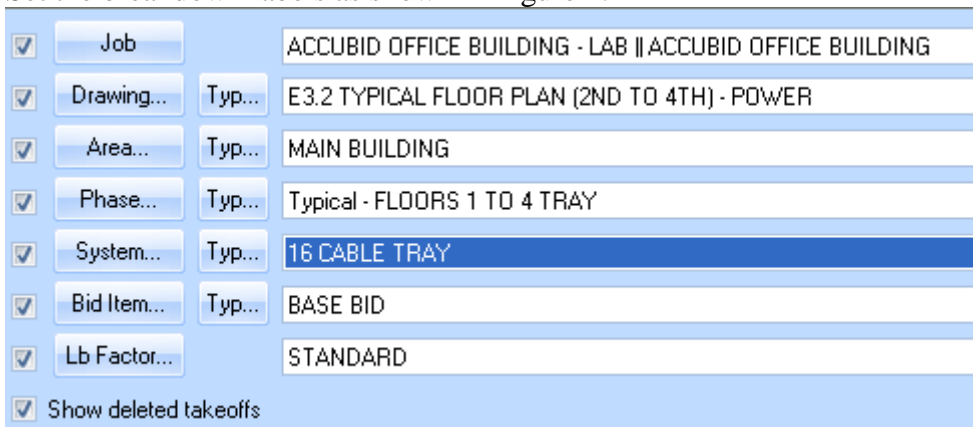


Figure 2

9. Choose DUCTS AND TRAYS from the drop down list in the Takeoff: area of the screen.

10. Double click:

[Line 1] CABLETRAY

[Line 3] 12" WIDE - STEEL GALV

[Line 2] 12" Wx 3" Dx 9" SPCG LADDER TRAY - STEEL GALV

11. In the Create/Modify Description window click on OK.

12. In the Measure Takeoff window change the Length of run to *YOUR NUMBER* and make sure that the Parallel Runs is set to 1. Then click on OK.

13. Add the following Items and QTY to the Takeoff:

<b>Item</b>	<b>QTY</b>
12" Wx 3" Dx 24" RAD LADDER 30 HORZ BEND - STL GALV	2.00
12" Wx 3" Dx 12" RAD LADDER HORZ T SECTION - STL GALV	2.00
12x 12x 18x 3" Dx 12" RAD LADDER HORZ XPND T SECTION - STL GALV	1.00
TRAY FIRE BARRIER	1.00
1 5/8x 1 5/8x 14G STRUT GALV	38.00
MALL BEAM CLAMP TO 1" FLNG W/ 3/8-16 THRD HOLE BTM+BACK	60.00
3/8" THREADED ROD - PLTD	120.00
3/8-16 HEX NUT - PLTD STL	120.00
3/8" LOCK WASHER - PLTD STL	120.00
3/8x 1 FENDER WASHER - PLTD STL	120.00

14. Right click in the audit window and click finish and OK.

15. Choose DUCTS AND TRAYS from the drop down list in the Takeoff: area of the screen.

16. Double click:

[Line 1] CABLETRAY

[Line 4] 18" WIDE - STEEL GALV

[Line 2] 18" Wx 3" Dx 9" SPCG LADDER TRAY - STEEL GALV

17. In the Create/Modify Description window click on OK.

18. In the Edit Takeoff window change the Length of run to *YOUR NUMBER* and make sure that the Parallel Runs is set to 1. Then click on OK.

19. Add the following Items and QTY to the Takeoff:

<b>Item</b>	<b>QTY</b>
1 5/8x 1 5/8x 14G STRUT GALV	4.00
MALL BEAM CLAMP TO 1" FLNG W/ 3/8-16 THRD HOLE BTM+BACK	4.00
3/8" THREADED ROD - PLTD	8.00
3/8-16 HEX NUT - PLTD STL	8.00
3/8" LOCK WASHER - PLTD STL	8.00
3/8x 1 FENDER WASHER - PLTD STL	8.00

20. Right click in the audit window and click finish and OK.

21. Save your Estimate.

## SYS 19 TELE/DATA CONDUIT

### Procedure

22. Obtain the SYS 19 TELE/DATA CONDUIT Takeoff Sheet.
23. Set the breakdown labels as shown in Figure 2.

<input checked="" type="checkbox"/>	Job	ACCUBID OFFICE BUILDING - LAB    ACCUBID OFFICE BUILDING
<input checked="" type="checkbox"/>	Drawing...	Typ... E3.0 BASEMENT FLOOR PLAN - POWER
<input checked="" type="checkbox"/>	Area...	Typ... MAIN BUILDING
<input checked="" type="checkbox"/>	Phase...	Typ... BASEMENT
<input checked="" type="checkbox"/>	System...	Typ... 19 TELEPHONE/DATA CONDUIT
<input checked="" type="checkbox"/>	Bid Item...	Typ... BASE BID
<input checked="" type="checkbox"/>	Lb Factor...	STANDARD
<input checked="" type="checkbox"/>	Show deleted takeoffs	

Figure 2

24. Choose COMMON ASSEMBLIES from the drop down list in the Takeoff: area of the screen.
25. Double click:
  - [Line 29] SYSTEMS - VOICE & DATA
  - [Line 1] TEL / DATA OUTLET - STUD WALL(10' - 3/4" EMT)

26. Enter the count value in the Measure Takeoff window and click OK.

The screenshot shows the 'Measure Takeoff' window. At the top, there is a 'Calculator' section with a numeric keypad and a 'Send Value' button. To the right, the 'Measurement Information' section shows a table with 'Count' as the variable and '1.00' as the value. Below this, the 'Takeoff Label' and 'Item / Assembly Name' fields both contain 'TEL / DATA OUTLET - STUD WALL(10' - 3/4" EMT)'. The 'Item Information' section shows 'Material \$: 16.24', 'Labor Hours: 1.04', and 'Avg Len:'. The main part of the window is a table with the following data:

	Item Description	Quantity	Base	Fct 1	Fct 2	Catalog Number
1	4x 2 1/8" SQ BOX COMB KO	1.00	Cnt	1.00	1.0	232
2	4" SQ 1G PLSTR RING 5/8" RISE	1.00	Cnt	1.00	1.0	768
3	SNAP-ON STUD BRKT VW FLUSH HAMMER-ON SQ BOX SUPPORT	1.00	Cnt	1.00	1.0	MSF
4	3/4" CONDUIT - EMT	10.00	Cnt	10.00	1.0	
5	3/4" CONN SS STL - EMT	2.00	Cnt	2.00	1.0	
6	1/2 OR 3/4" SNAP CLOSE CLIP - SIDE MNT TO MTL STUD SUPPORT	2.00	Cnt	2.00	1.0	812MF
7	POLYTWINE	13.00	Cnt	13.00	1.0	PL231

At the bottom of the window are buttons for 'OK', 'Cancel', 'Add', and 'Delete'.

Figure 3

27. Change the Breakdown and repeat for the remaining takeoff.
28. Save the Estimate.