

# CM 352 – Electrical Construction Estimating

## Accubid Activity #13

### Accubid Office Building - 45 INCOMING SERVICE - TELEPHONE

#### INCOMING SERVICE - TELEPHONE

##### Procedure

1. Start the program Accubid Pro 13 [Start, All Programs, Trimble, Classic 13, Accubid Pro 13]
2. Press the CAPS LOCK Key ON
3. From the Job Schedule Screen open the file, Accubid Office Building.
4. If not already selected, select the Takeoff tab at the bottom of the screen.
5. Make sure that the **L100 v8 us neca imp** is the currently selected database. If not, switch to it by clicking on the Database menu and choosing the Select command.
6. Set the breakdown labels as shown in Figure 1.

<input checked="" type="checkbox"/>	Job		ACCUBID OFFICE BUILDING - LAB    ACCUBID OFFICE BUILDING
<input checked="" type="checkbox"/>	Drawing...	Typ...	E1.1 ELECTRICAL SITE PLAN - POWER/LIGHTING
<input checked="" type="checkbox"/>	Area...	Typ...	MAIN BUILDING
<input checked="" type="checkbox"/>	Phase...	Typ...	SITE
<input checked="" type="checkbox"/>	System...	Typ...	45 INCOMING SERVICE - TELEPHONE
<input checked="" type="checkbox"/>	Bid Item...	Typ...	BASE BID
<input checked="" type="checkbox"/>	Lb Factor...		STANDARD
<input checked="" type="checkbox"/>	Show deleted takeoffs		

Figure 1

7. Choose FEEDER CONDUIT AND WIRE from the drop down list in the Takeoff: area of the screen.  
Double click:  
[Line 6] PVC  
[Line 10] 4" PVC (TRENCH)
8. In the Create/Modify Takeoff Description window edit the Takeoff Label as shown in Figure 3 and then click OK.

Create/Modify Takeoff Description

4" PVC (TRENCH) INCOMING SERVICE - TELEPHONE

OK Cancel

Figure 3

- In the Measure Takeoff window enter in the Conduit Length, Count, and the number of Parallel Runs from your takeoff sheet and make changes to the Item Description and Fct 1 and Fct 2 as shown in Figure 4.

Measure Takeoff

Calculator | Notes

Measurement Information  Reverse Takeoff

Probe Information:

Scale: No Scale

Length:

Count:

Measurement Variable	Value
Conduit Length	1.00
Count	1.00
Parallel Runs	1

Takeoff Label: 4" PVC (TRENCH) INCOMING SERVICE - TELEPHONE

Item / Assembly Name: 4" PVC (TRENCH)

Item Information: Material \$: 513.58 Labor Hours: 7.10 Avg Len: 1.00

	Item Description	Quantity	Base	Fct 1	Fct 2	Catalog Number
1	4" CONDUIT - PVC40	1.00	Len	1.00	1.0	
2	4" ADAPTER MALE - PVC	2.00	Cnt	2.00	1.0	
3	4" COUPLING - PVC	4.00	Cnt	4.00	1.0	
4	4" ELBOW 90 DEG - RMC - GALV	2.00	Cnt	2.00	1.0	
5	4" CONDUIT - RMC - GALV	15.00	Abs	15.00	1.0	

Buttons: OK, Cancel, Add, Delete

Figure 4

- From the next takeoff window, FEEDER CONDUIT FITTINGS, add a 1/4" POLYROPE (M).
- Right click in the Audit Trail window and click Finish.
- Change the Breakdown as shown in Figure 5.

Job: ACCUBID OFFICE BUILDING - LAB || ACCUBID OFFICE BUILDING  
 Drawing... Typ...: E6.3 ELECTRICAL DETAILS - SECTIONS  
 Area... Typ...: MAIN BUILDING  
 Phase... Typ...: FIRST FLOOR  
 System... Typ...: 45 INCOMING SERVICE - TELEPHONE  
 Bid Item... Typ...: BASE BID  
 Lb Factor...: STANDARD  
 Show deleted takeoffs

Figure 5

- Choose FEEDER CONDUIT AND WIRE from the drop down list in the Takeoff: area of the screen.  
 Double click:  
 [Line 1] EMT - STEEL FITTINGS  
 [Line 6] 2" EMT - STEEL SS  
 [Line 6] 2" EMT STRUT MOUNT

- 14. In the Create/Modify Takeoff Description box edit the takeoff label to 2" EMT STRUT MOUNT - FIRST FLOOR TELE/COMM RISER, and then click OK.
- 15. In the Measure Takeoff window enter in the Conduit Length, Count, and Parallel Runs and click OK.

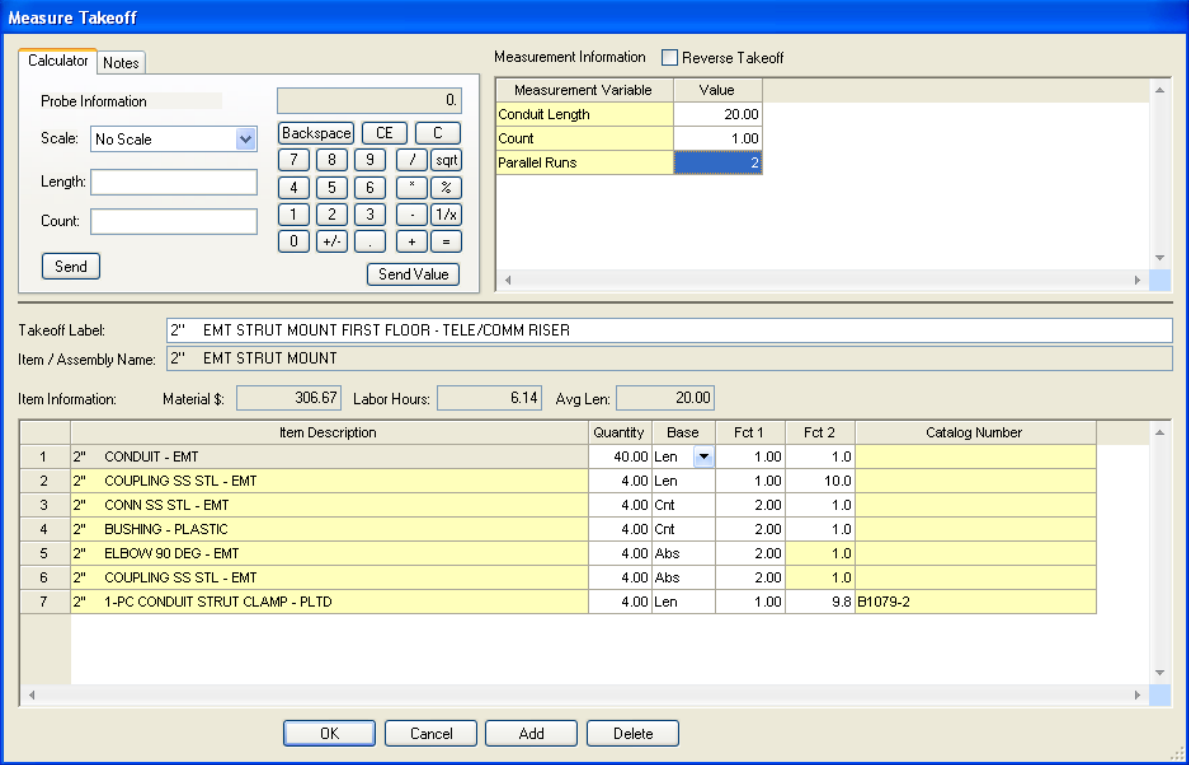


Figure 6

- 16. Click the Next button on the toolbar.
- 17. Double click on:
  - [Line 10] WIRE PULLING
  - [Line 7] POLYTWINE

- 18. In the Measure Takeoff window change # conductors value to 1 and click OK.

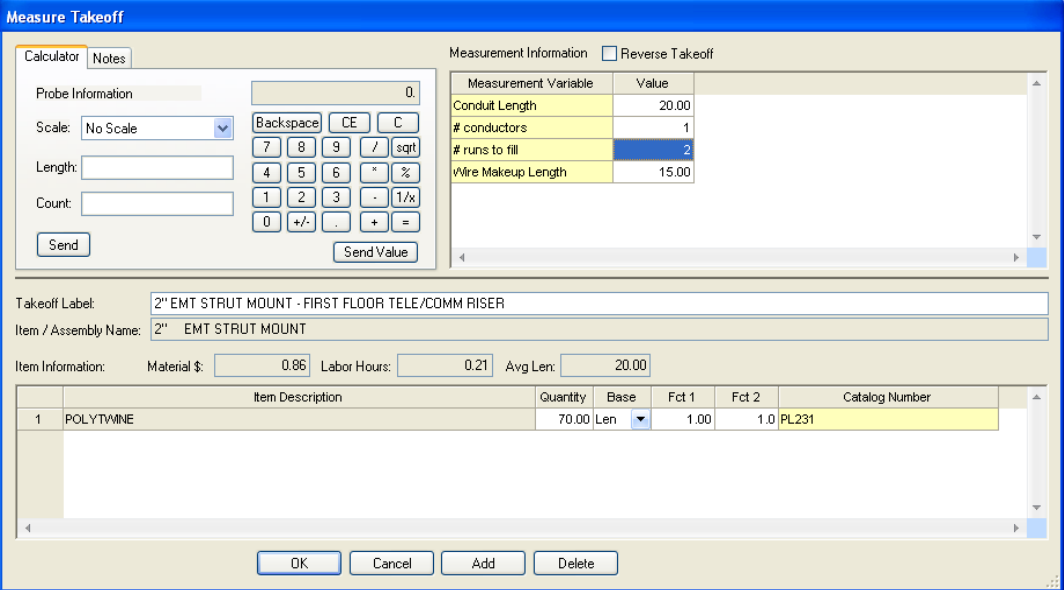


Figure 7.

19. Right click in the Audit trail description area and click Finish.
20. Right click on the 2" EMT STRUT MOUNT - FIRST FLOOR TELE/COMM RISER in the Audit Description Area and click on the Copy command from the menu.

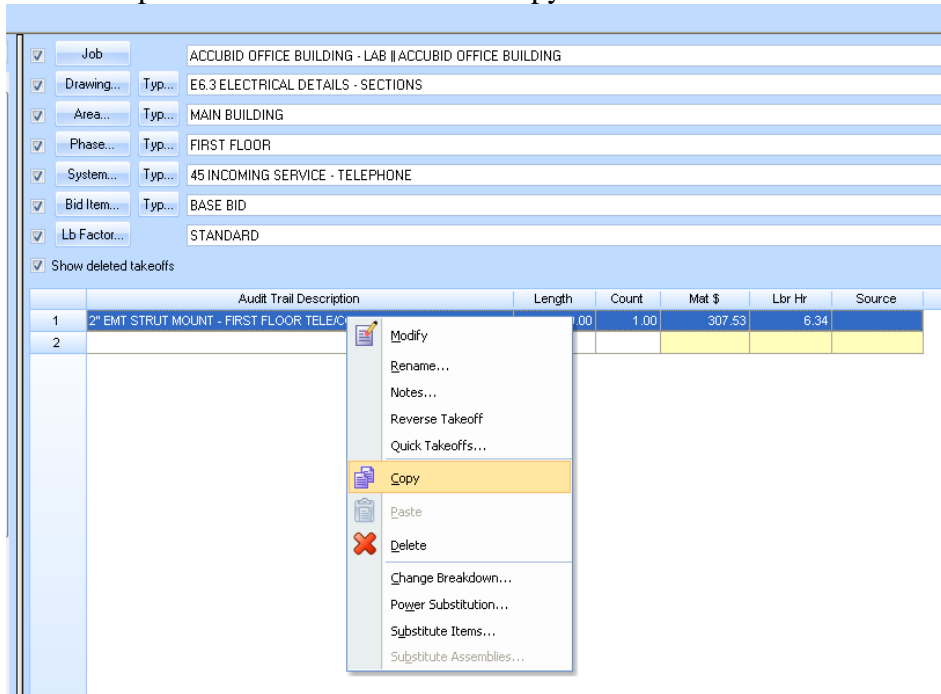


Figure 8

21. Change the Breakdown as shown in Figure 9.

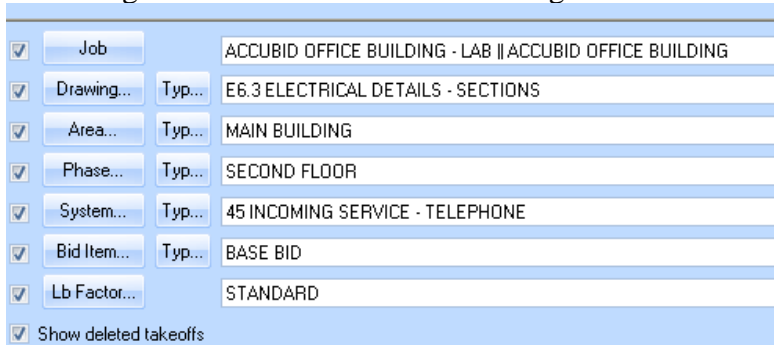


Figure 9

22. Right click in the Audit Trail Description Area and click on Paste. In the Paste Takeoffs window make sure Retain all settings in selected and then click OK.



Figure 10

23. Right click on the takeoff in the Audit Trail Description and click on Modify.
24. Double click on the first Item Description, 2" CONDUIT – EMT, in the takeoff.

	Item Description	Quantity
1	2" CONDUIT - EMT	40.00
2	2" COUPLING SS STL - EMT	4.00
3	2" CONN SS STL - EMT	4.00
4	2" BUSHING - PLASTIC	4.00
5	2" ELBOW 90 DEG - EMT	4.00
6	2" COUPLING SS STL - EMT	4.00
7	2" 1-PC CONDUIT STRUT CLAMP - PLTD	4.00
8	POLYTWINE	70.00
9		

Figure 11

25. In the Edit Takeoff window change the Conduit Length value and the Takeoff Label as shown in Figure 12. Click OK.

**Edit Takeoff**

Calculator | Notes

Probe Information:

Scale: No Scale

Length:      

Count:

Measurement Information  Reverse Takeoff

Measurement Variable	Value
Conduit Length	40.00
Count	1.00
Parallel Runs	2

Takeoff Label:

Item / Assembly Name:

Item Information: Material \$:  Labor Hours:  Avg Len:

	Item Description	Quantity	Base	Fct 1	Fct 2	Catalog Number
1	2" CONDUIT - EMT	80.00	Len	1.00	1.0	
2	2" COUPLING SS STL - EMT	8.00	Len	1.00	10.0	
3	2" CONN SS STL - EMT	4.00	Cnt	2.00	1.0	
4	2" BUSHING - PLASTIC	4.00	Cnt	2.00	1.0	
5	2" ELBOW 90 DEG - EMT	4.00	Abs	2.00	1.0	

Figure 12

26. Right click in the Audit trail description area and click Finish.
27. Repeat the process for the third and fourth floor:
  - 2" EMT STRUT MOUNT - THIRD FLOOR TELE/COMM RISER
  - 2" EMT STRUT MOUNT - FOURTH FLOOR TELE/COMM RISER
28. Save your estimate.