

Accubid Activity #14 Accubid Office Building - 43 SITE LIGHTING

Procedure

1. Start the program Accubid Pro 15 [Start, Trimble, Accubid Pro 15]
2. Press the CAPS LOCK Key ON
3. From the Job Schedule Screen open the file, Accubid Office Building.
4. If not already selected, select the Takeoff tab at the bottom of the screen.
5. Make sure that the **L100 v8 us neca imp** is the currently selected database. If not, switch to it by clicking on the Database menu and choosing the Select command.
6. Set the breakdown labels as shown in Figure 1.

<input checked="" type="checkbox"/>	Job	ACCUBID OFFICE BUILDING - LB ACCUBID OFFICE BUILDING
<input checked="" type="checkbox"/>	Drawing...	Typ... E1.1 ELECTRICAL SITE PLAN - POWER/LIGHTING
<input checked="" type="checkbox"/>	Area...	Typ... MAIN BUILDING
<input checked="" type="checkbox"/>	Phase...	Typ... SITE
<input checked="" type="checkbox"/>	System...	Typ... 43 SITE LIGHTING
<input checked="" type="checkbox"/>	Bid Item...	Typ... BASE BID
<input checked="" type="checkbox"/>	Lb Factor...	STANDARD
<input checked="" type="checkbox"/>	Show deleted takeoffs	

Figure 1

7. Choose FIXTURES form the Takeoff: area of the screen.

	Designation
1	A - 2X4 FL 4L T-BAR LAY-IN
2	A1- 2X4 FL 3L T-BAR LAY-IN
3	A2 - 2X4 FL 2L T-BAR LAY-IN
4	B - 2X2 FL 2UL T-BAR LAY-IN
5	C -32W COMPACT FL DOWNLIGHT
6	C1 - 100W INC DOWNLIGHT
7	D - 70W MH RECESSED HID
8	F - 4' FL 2L STRIP CHAIN HUNG
9	G - 100W VP INC ELEVATOR PIT
10	H - 4' FL 2L SURF STARWELL
11	J - 4' FL 2L COVE STRIP
12	J1 - 3' FL 2L COVE STRIP
13	K - 2X4 FL T-BAR LAY-IN
14	M - 175W MH HID WALL PACK
15	S1 - 1H 400W MH 25' POLE
16	S2 - 2H 400W MH 25' POLE
17	X - LED EXIT/EM UNIT T-BAR
18	X2 - LED EXIT/EM UNIT DBL FACED T-BAR
19	Y - EM BATTERY UNIT - SINGLE HEAD

Figure 2

8. Using your SYS 43 SITE LIGHTING Takeoff sheet, add the Site Fixtures S1 & S2 to your estimate. Be sure to put a red line through the quantity on your takeoff sheet.
9. Change the Takeoff: to FEEDER CONDUIT AND WIRE
Double click on:
[Line 6] PVC
[Line 2] 3/4" PVC (TRENCH)

In the Create/Modify Takeoff Description box edit the Takeoff Label as shown in Figure 3 and click OK.

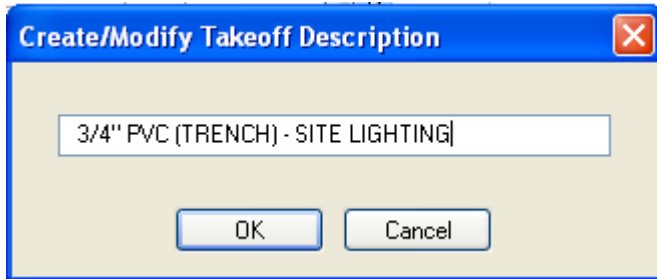


Figure 3

10. In the Measure Takeoff window enter in the Conduit Length, Count, and Parallel Runs. Edit the Item Description area, Base, Fct 1, and Fct 2 values as shown in Figure 4 and click OK.

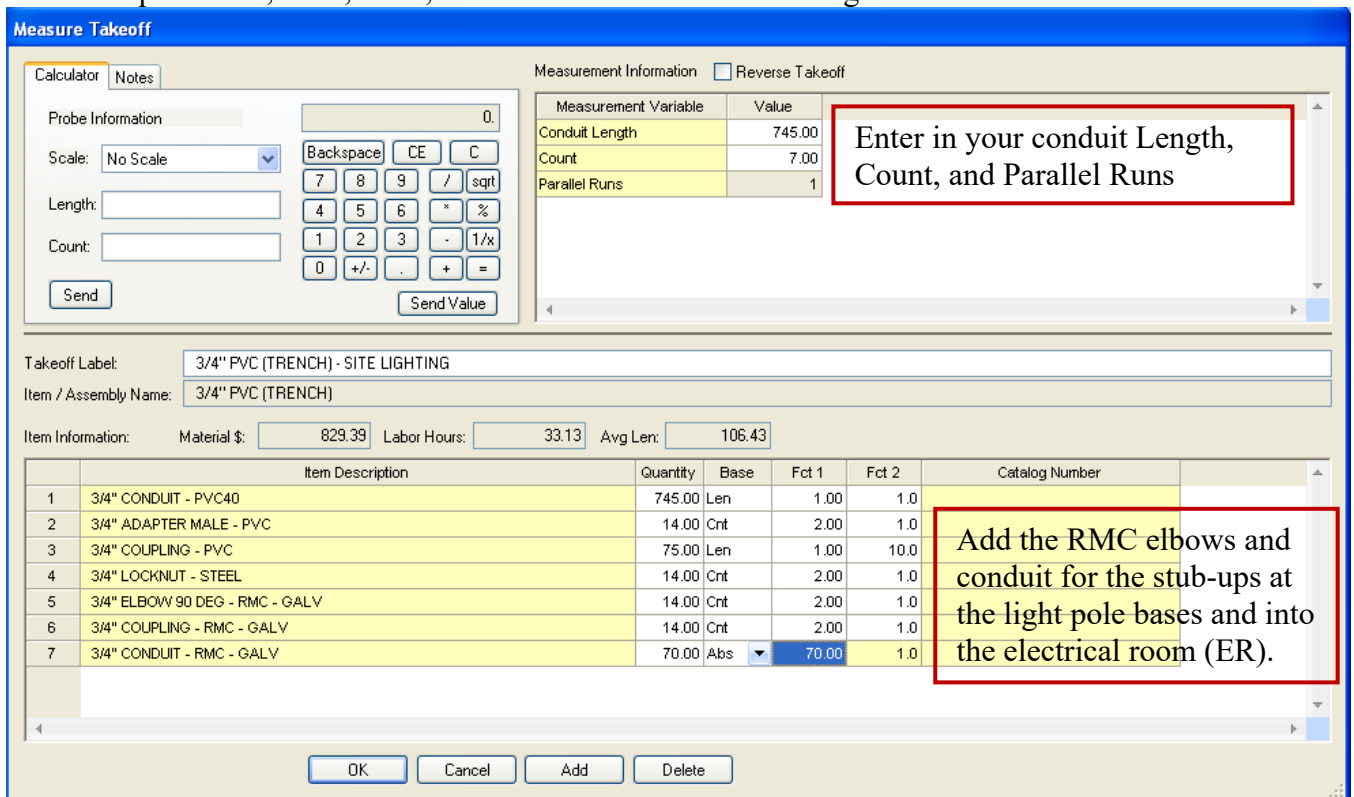


Figure 4

11. Using the Takeoff: FEEDER WIRE double click on:
[Line 1] THHN WIRE
[Line 7] # 8 THHN BLACK

In the Measure Takeoff window change the # of conductors to 2 and click OK.

12. Using the Takeoff: FEEDER WIRE double click on:
 [Line 3] #10 THHN BLACK

In the Measure Takeoff window change the # of conductors to 1 and click OK.

13. Right Click in the Item Description and click Finish and OK.

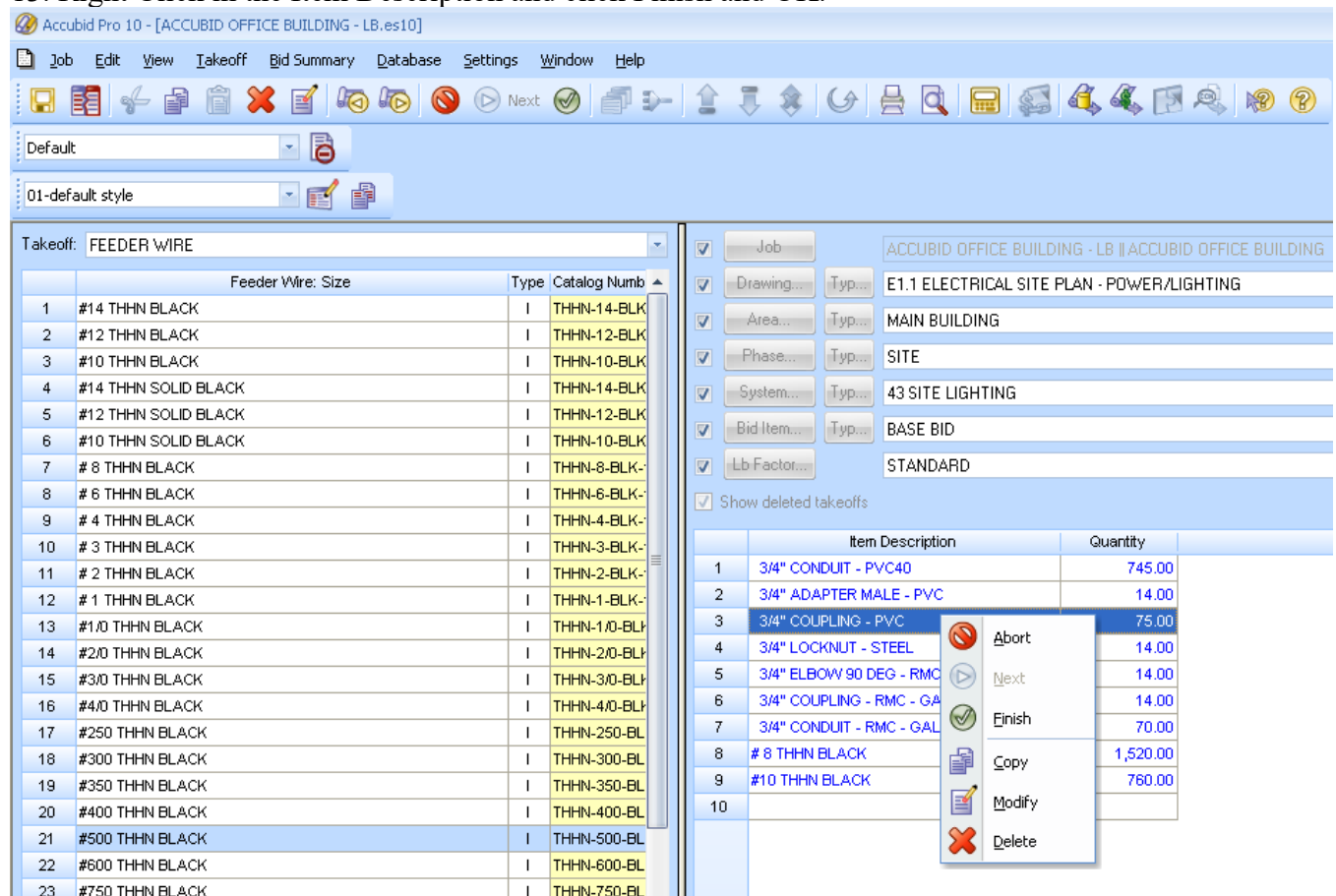


Figure 5

14. Save your Estimate.