

# CM 352 – Electrical Construction Estimating

## Accubid Activity #2

### Building Fixture Designations and Fixture Takeoff SYS 06 FIXTURES

#### Building Fixture Designations

1. Start the program Accubid Pro 12 [Start, All Programs, Trimble, Classic 12, Accubid Pro 12]
2. Press the CAPS LOCK Key ON
3. From the Job Schedule Screen open the file, Accubid Office Building.

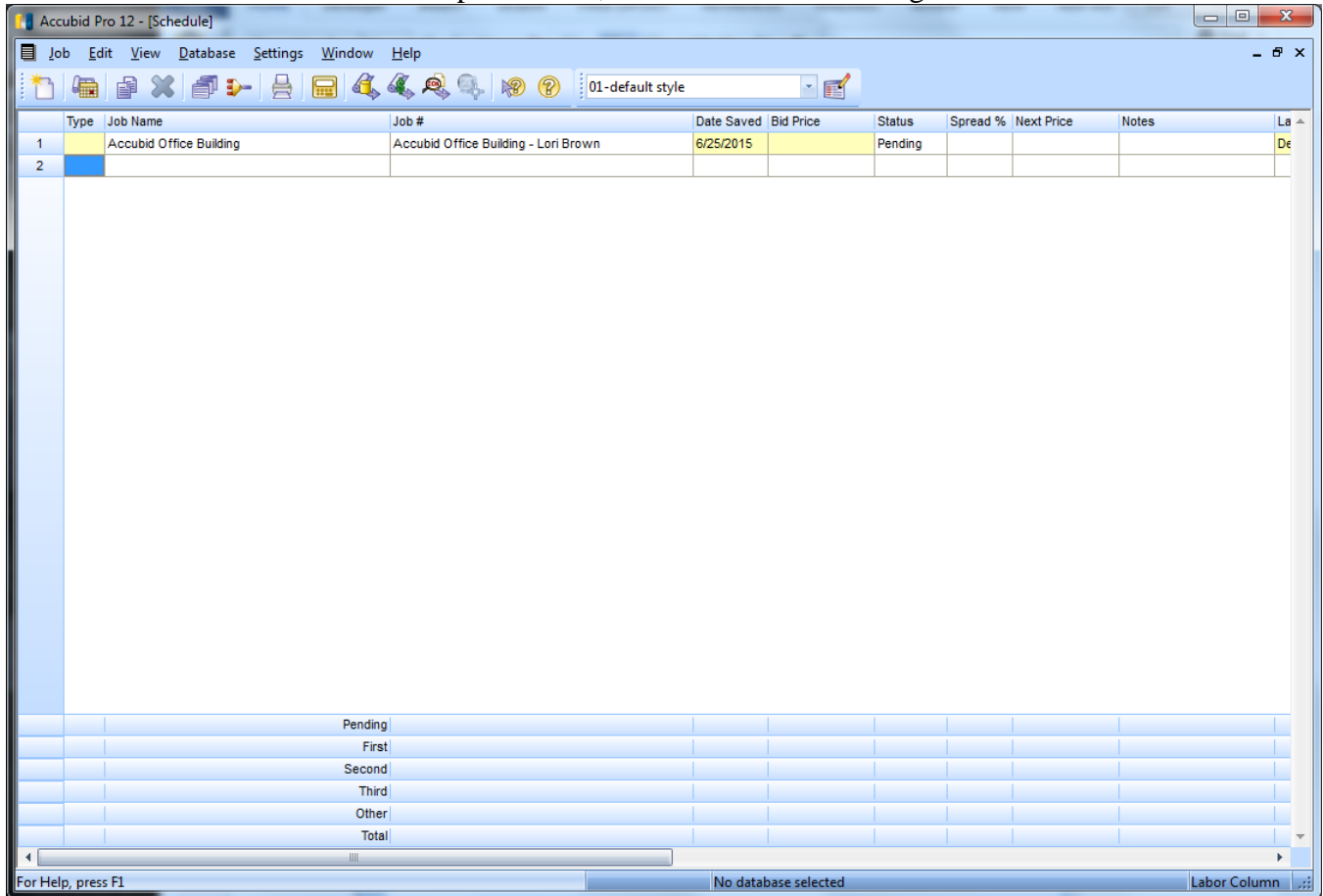
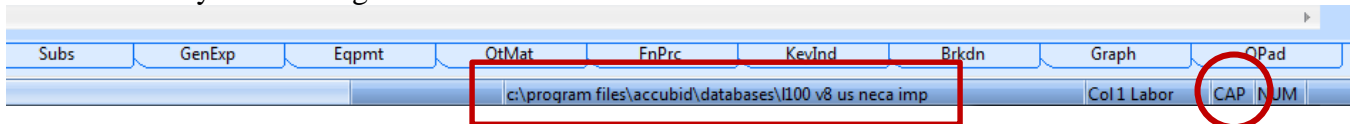


Figure 1

4. Make sure you are using the Database: L100 V8 US NECA IMP



5. If not already selected, select the Takeoff tab at the bottom of the screen.

## FIXTURES - DESIGNATIONS

In Accubid (Electrical) there are three systems that use **Designations**:

FIXTURES

HEATING

DISTRIBUTION

Creating a designation involves selecting any number of different items and assemblies, and then assigning them a designation name. Once you have created the designation, you can take off all the items in the designation in a single step. Any changes you make to the designation will be automatically reflected in all takeoffs performed using that designation.

6. Choose FIXTURES from the DROP DOWN list in the Takeoff: area of the screen.



7. Double click the first blank line below the Designation heading.  
The Create/Modify Designation Description dialog will appear. Descriptions can be a maximum of 80 characters.

8. Enter: A - 2X4 FL 4L T-BAR LAY-IN in the dialog box and press OK.

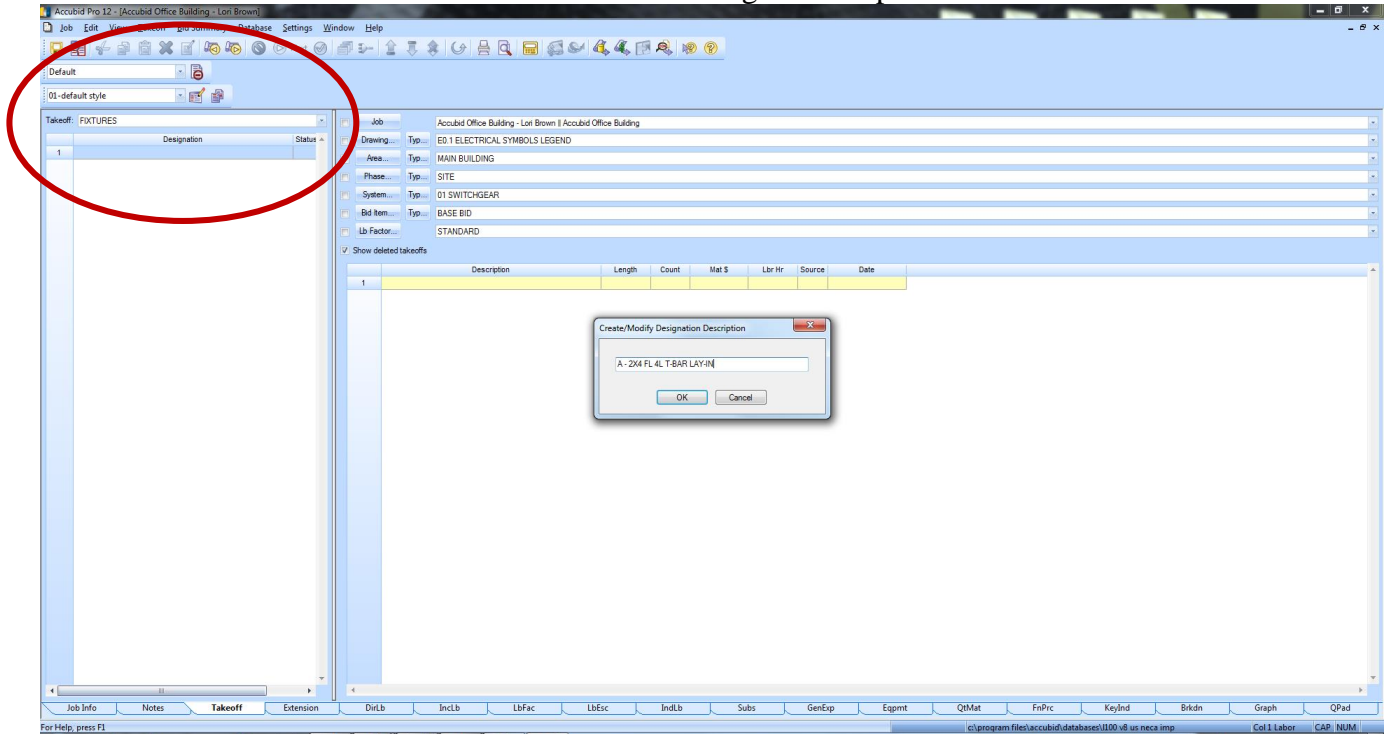


Figure 2

Using a series of dialog boxes Accubid will step through building the FIXTURE DESIGNATION in the following order:

Fixtures: Category

Fixtures: Type

Fixtures: Size

9. To build the Fixture Designation: A - 2X4 FL 4L T-BAR LAY-IN

Double click to select the following:

Fixtures: Category

Line 1 FLUORESCENT LUMINAIRES

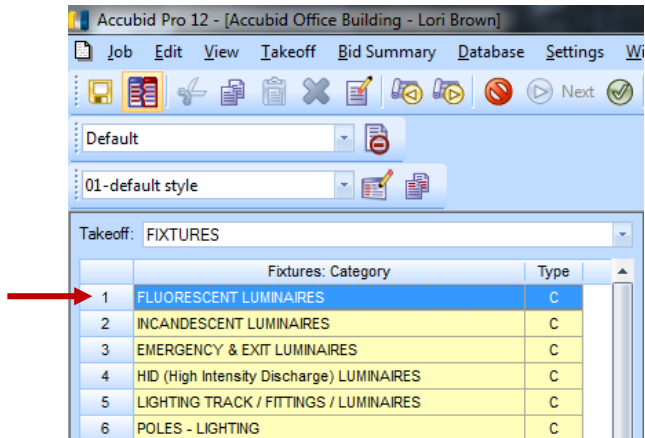


Figure 3

Fixtures: Type

Line 1 FLUORESCENT LUMINAIRES - RECESSED

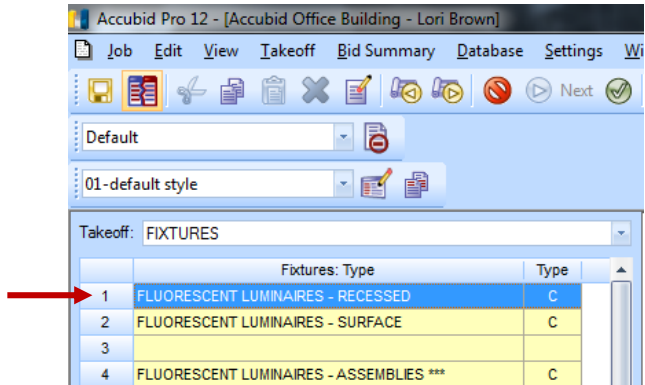


Figure 4

Fixtures: Size

Line 8 2' x 4' DROP-IN T-BAR

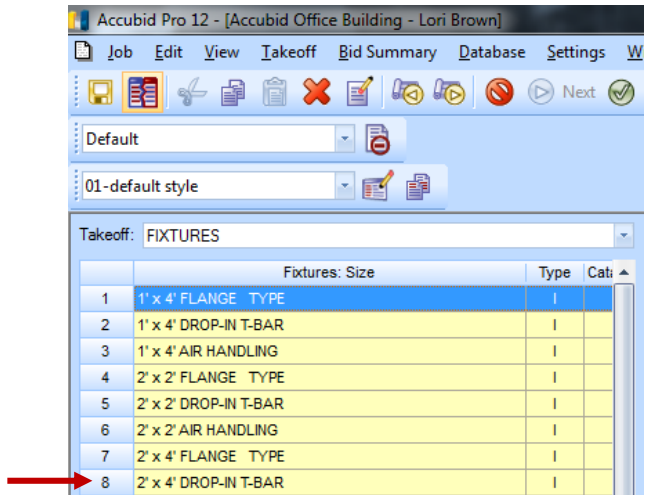


Figure 5

The Measure Takeoff dialog box appears which is used to build the designation one **item** at a time.

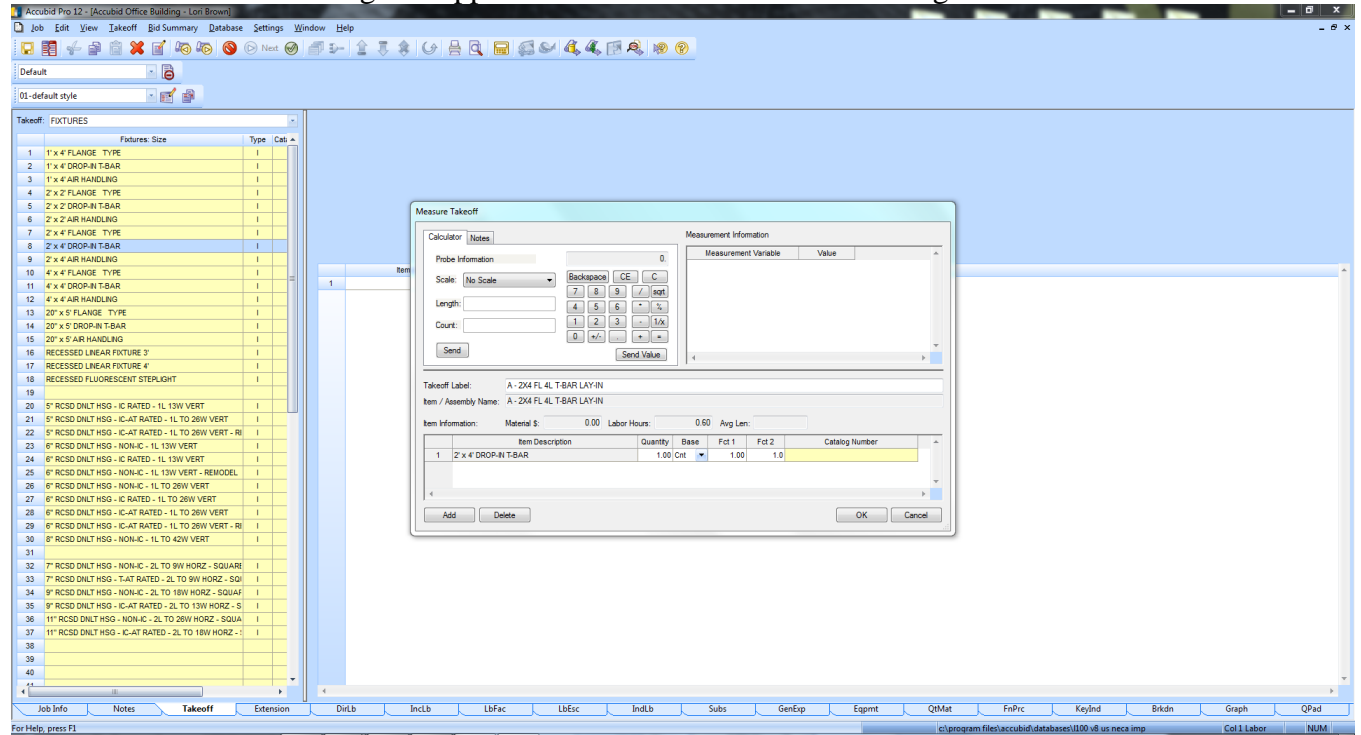


Figure 6

Example: FIXTURE A

FIXTURE TYPE	DESCRIPTION	VOLTAGE	LAMPS	MANUF. & CATALOG #	FIXTURE
"A"	2'x4' FLUORESCENT LAY-IN LIGHT FIXTURE, 4-LAMP, 3" DEEP (18) CELL PARABOLIC SPECULAR LOUVER, COLD ROLLED STEEL HOUSING AND DOOR, BAKED WHITE POWDER ENAMEL FINISH, INSTANT START ELECTRONIC BALLAST.	277	(4) 32 WATT (FLUOR.) (F32T8/35K)	COOPER # 2EP3GAX-432S36I- 277V-L8735-EB81-U	

Below is the list of items that will be added to the FIXTURE DESIGNATION:  
(Instructions are on the next page)

<u>ITEM</u>	<u>QTY</u>
2' x 4' DROP-IN T-BAR	1.00
#14/2C CABLE MC - STL ARMOR	7.00
3/8" CONN AC-90 / MC DC SS	2.00
3/8" CABLE SUPPORT FOR ROD OR FLNG	1.00
WIRE CONN YEL (#18 TO #12)	3.00
CEILING CLIP W/ 27mm STD NAIL - STL/CONC	2.00
#12 CEILING WIRE	14.00
T-BAR CLIP FOR STRAIGHT LIP LAY-IN FIXTURE	4.00

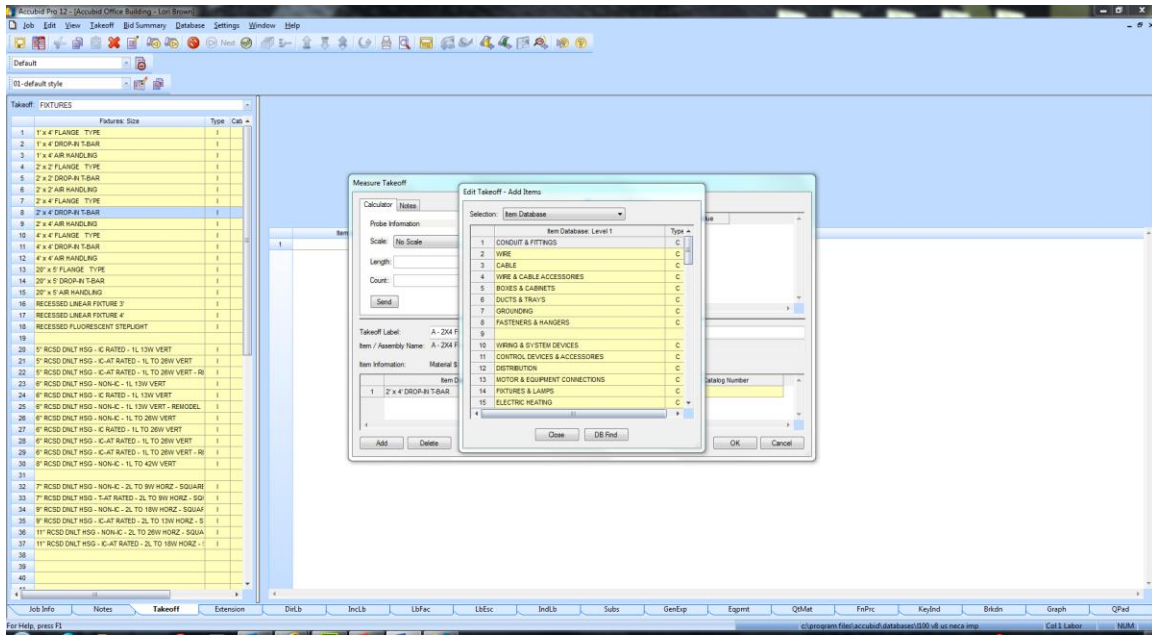


Figure 7

10. Click on ADD in the Measure Takeoff window. To ADD the Item, **#14/2C CABLE MC - STL ARMOR** to the FIXTURE DESIGNATION:

Double Click on:

Line 3 – CABLE C

Line 2 – MC CABLE C

Line 1 – MC CABLE 600V STEEL ARMOR C

Line 1– #14/2C CABLE MC - STL ARMOR I

Notice that the Item was ADDED to the Item Description list in the Measure Takeoff dialog box.

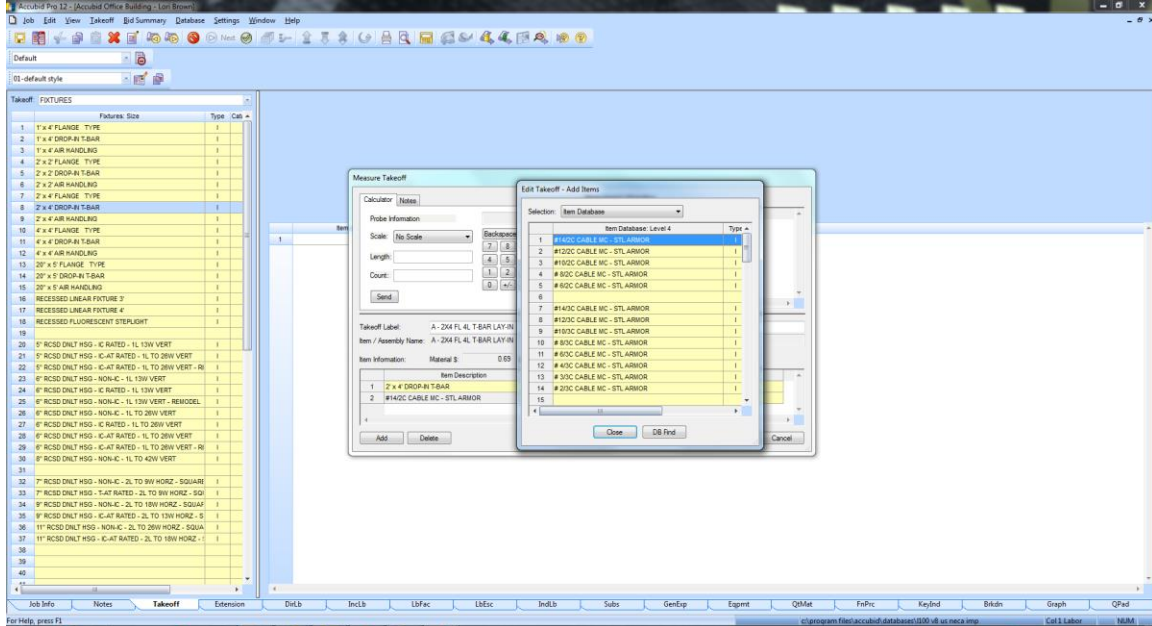


Figure 8

Note: To “Backup” in the Edit Takeoff – Add Items dialog box you can press the ESC Key or click the Right Mouse button in the Window.

11. Press the Right Mouse Button Three Times to get back to **Item Database: Level 1**.

12. To Add the Item, **3/8" CONN AC-90 / MC DC SS** by double click on the following:
- Line 4 – WIRE AND CABLE ACCESSORIES C
  - Line 2 – AC-90/MC / NM-B CONN & FITTINGS C
  - Line 1 – BX CONNECTORS C
  - Line 1 – 3/8" CONN AC-90 / MC DC SS I

### USING DB FIND

13. To Add the Item, **3/8" CABLE SUPPORT FOR ROD OR FLNG** click on the DB Find button.
14. In the Find Database Item/Assembly window enter the Item in the Search Text: textbox and under the Search for command select the radio button **Items only**. Click on the **Find Now** button.

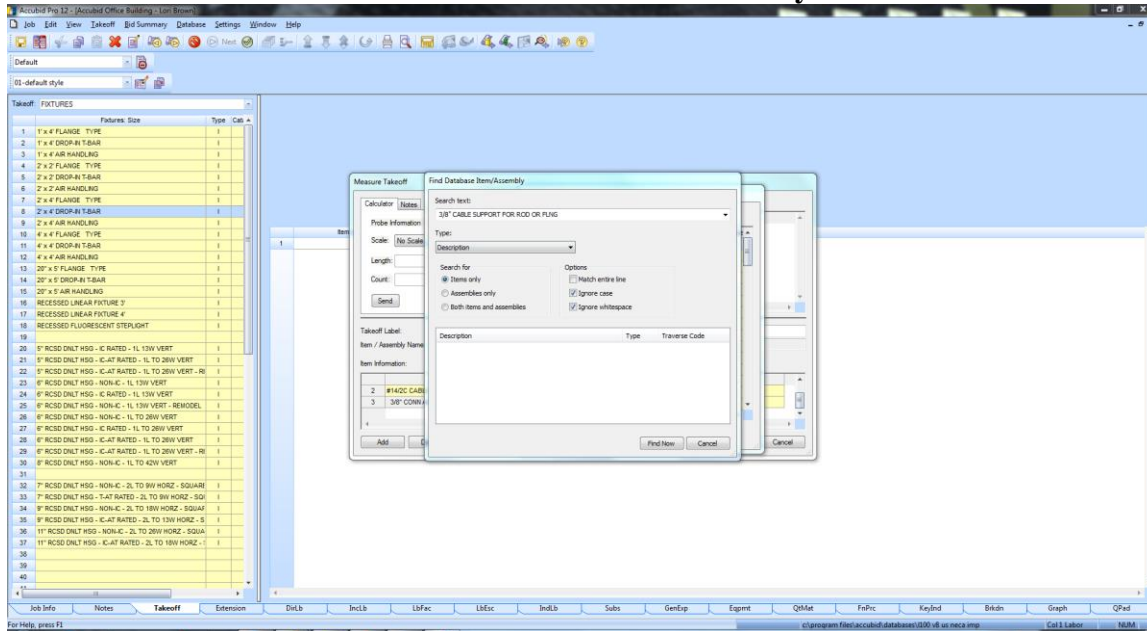


Figure 9

The Item is located and displays in the dialog box.

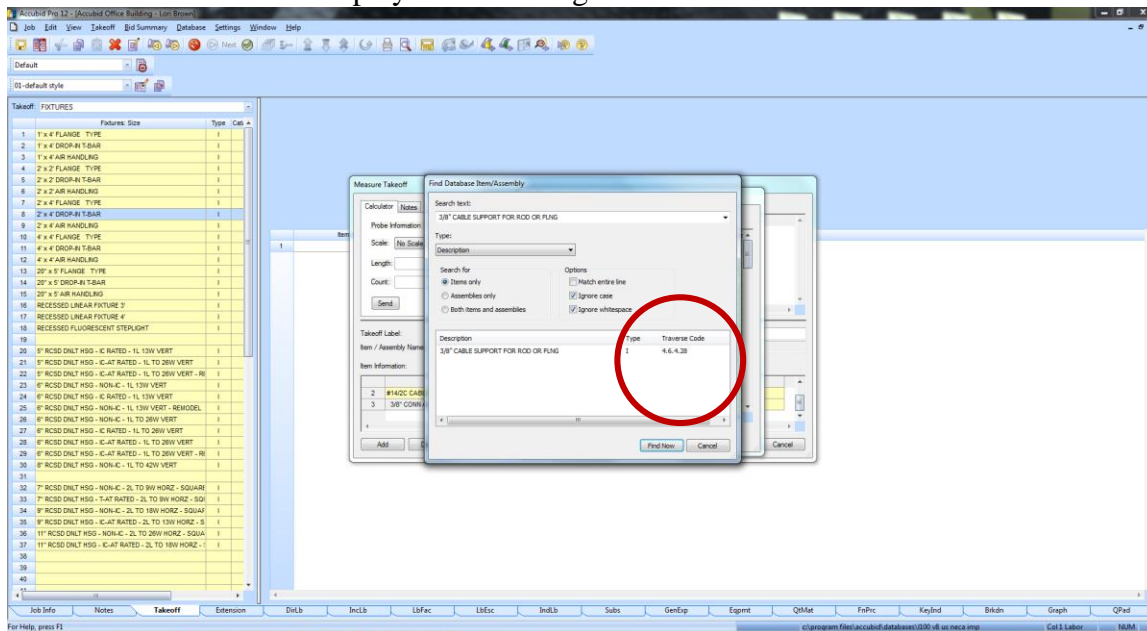


Figure 10

Notice the TRAVERSE CODE 4.6.4.28

The Traverse Code is the list of Line numbers starting from Item Database: Level 1 to the Item.

15. Double Click on the item listed under Description to open the Item Database for that Item.  
 The Edit Takeoff – Add Items Window is open leaving the Find Database Item/Assembly Window open. Click Cancel to close the Find Database Item/Assembly Window.

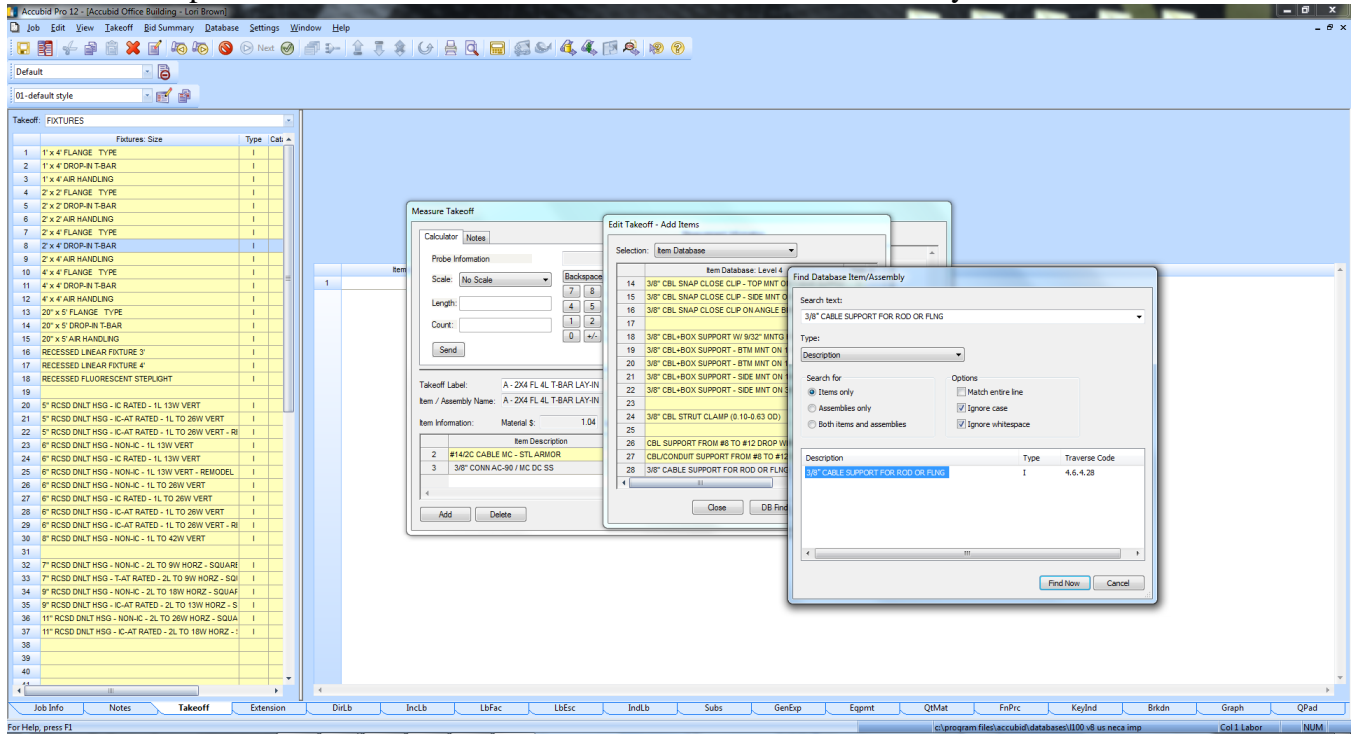


Figure 11

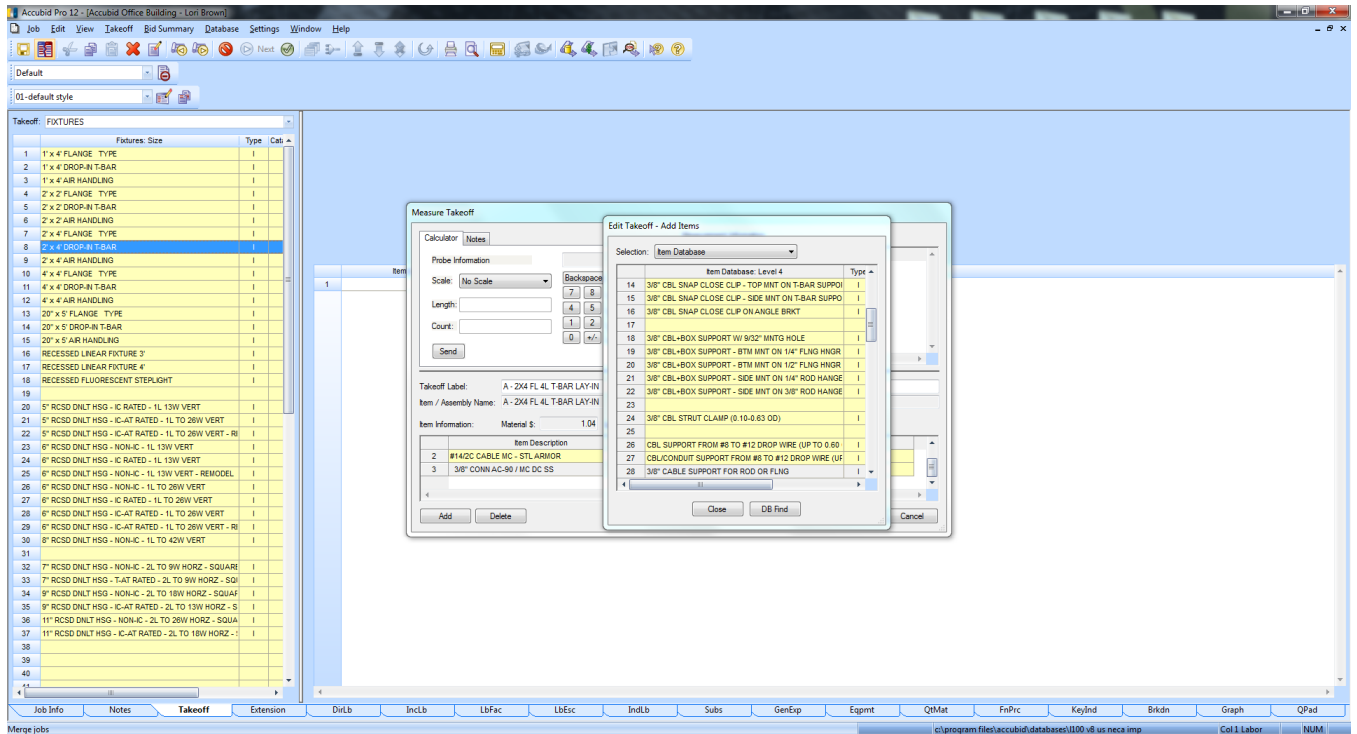


Figure 12

16. Double click on Line 28 3/8" CABLE SUPPORT FOR ROD OR FLNG to Add it to your FIXTURE DESIGNATION.

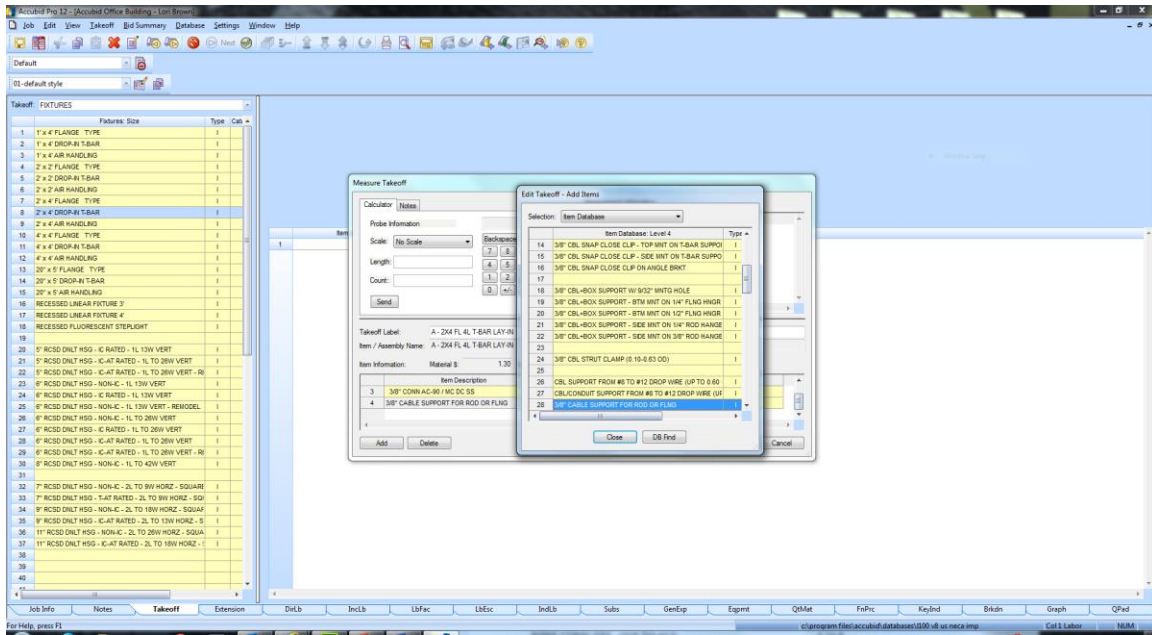


Figure 13

17. Press the Right Mouse Button Three Times to get back to **Item Database: Level 1**.
18. ADD the Remaining Items Using Either the DB Find or by Browsing the Item Database (see Traverse Codes below).

Remaining Items

WIRE CONN YEL (#18 TO #12)  
 CEILING CLIP W/ 27mm STD NAIL - STL/CONC  
 #12 CEILING WIRE  
 T-BAR CLIP FOR STRAIGHT LIP LAY-IN FIXTURE

Traverse Codes (Item Database)

4.10.5  
 8.11.8.1  
 8.13.3.4  
 8.9.14.1

19. Click the Close button to close the Edit Takeoff – Add Items Window

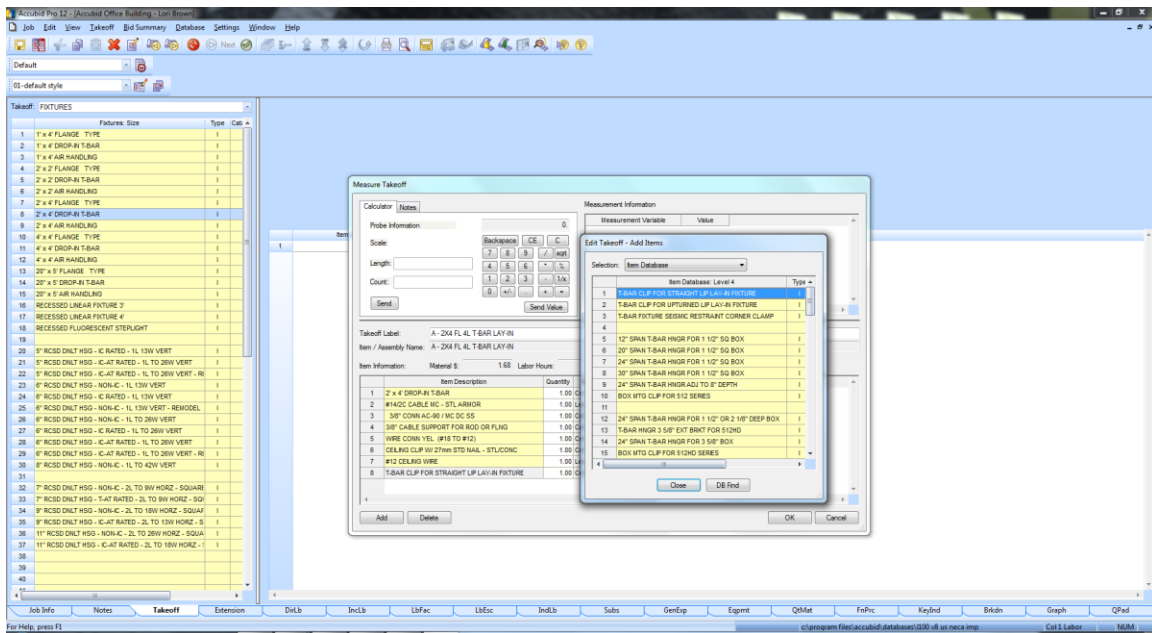


Figure 14



## All Items have now been Added to the Fixture Designation.

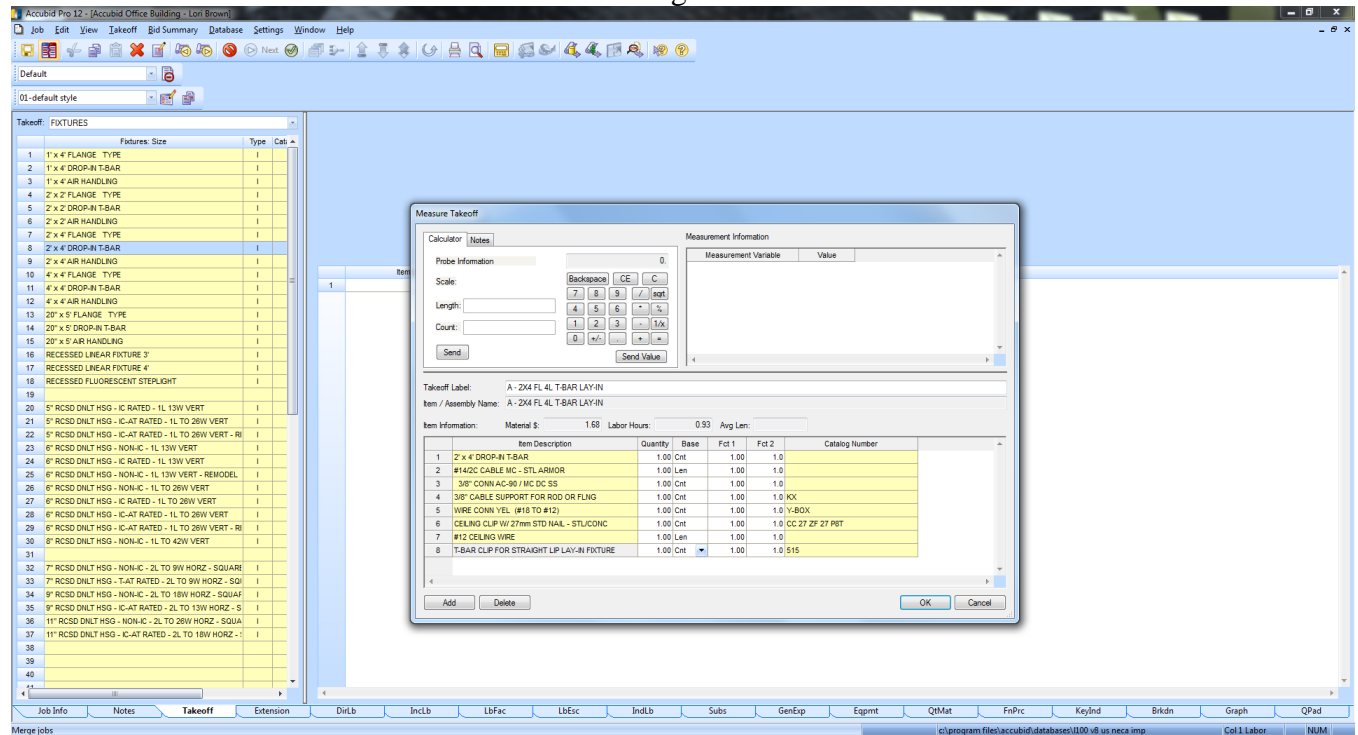


Figure 15

In the Measure Takeoff dialog box the Quantity of Each Item is determined by the Base and the variables Fct 1 and Fct 2.

Base can be set to Cnt, Len, or Abs [i.e. Based on Count, Length, or Absolute (fixed)]

Fct 1 is a Multiplier

Fct 2 is a Divider

**NEVER TYPE IN THE QUANTITY FIELD UNLESS INSTRUCTED TO!**

20. For each FIXTURE A Designation taken off we want to include the QTY of material shown below. Change the following for each item, if necessary, the Base, Fct 1 and Fct 2 as shown below:

ITEM	Base	Fct 1	Fct 2
2' x 4' DROP-IN T-BAR	Cnt	1.00	1.0
#14/2C CABLE MC - STL ARMOR	Cnt	7.00	1.0
3/8" CONN AC-90 / MC DC SS	Cnt	2.00	1.0
3/8" CABLE SUPPORT FOR ROD OR FLNG	Cnt	1.00	1.0
WIRE CONN YEL (#18 TO #12)	Cnt	3.00	1.0
CEILING CLIP W/ 27mm STD NAIL - STL/CONC	Cnt	2.00	1.0
#12 CEILING WIRE	Cnt	14.00	1.0
T-BAR CLIP FOR STRAIGHT LIP LAY-IN FIXTURE	Cnt	4.00	1.0

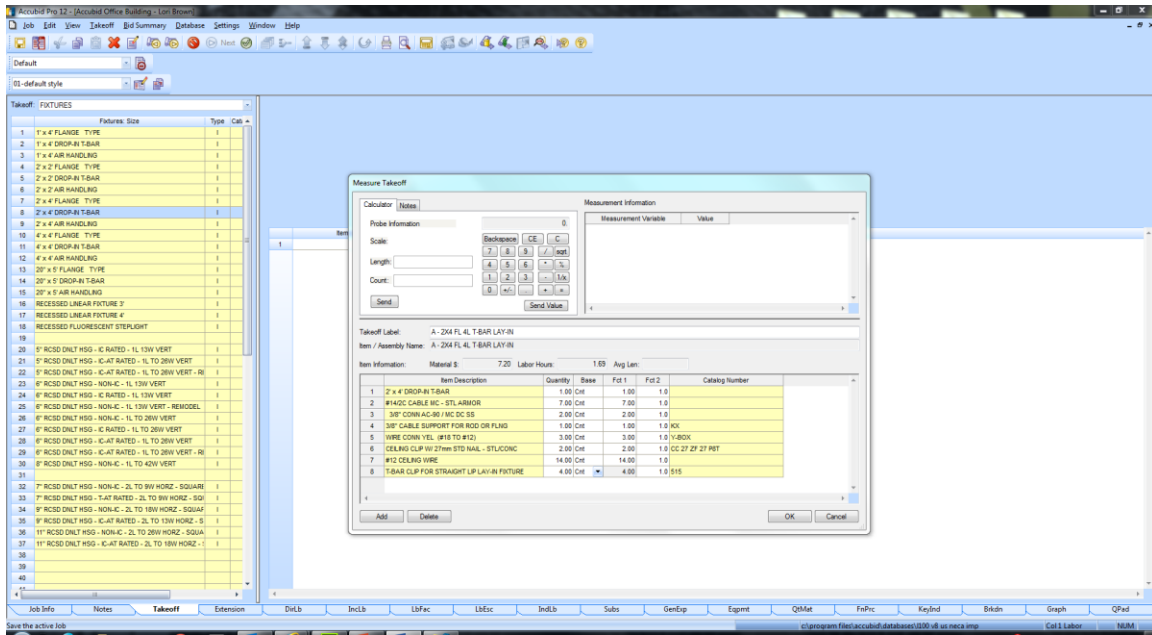


Figure 16

21. Click the OK button.

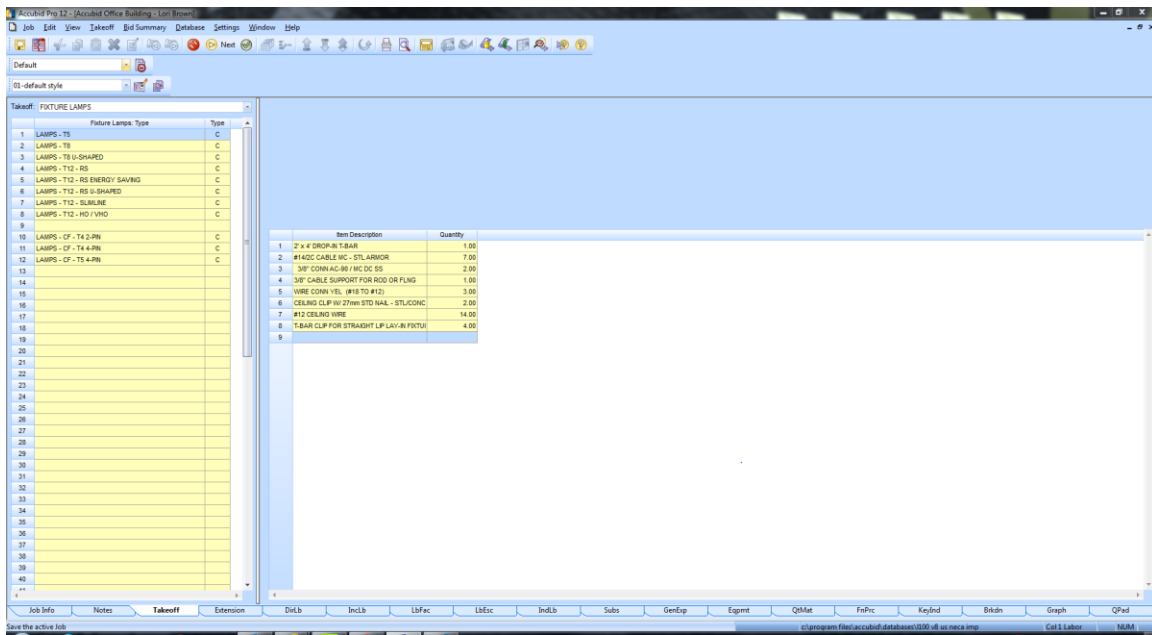


Figure 17

**The Fixture Lamps: Type screen appears next [Takeoff:]**

22. To Add Lamps to your Fixture Designation double click on:

- LAMPS – T8 Line 2
- 48" 3500K 78 CRI 32W LAMP - T8 Line 8

23. Change the Count per Unit Value to 4.00 and press the enter key.

24. Click OK to Add the Lamps to the Fixture Designation

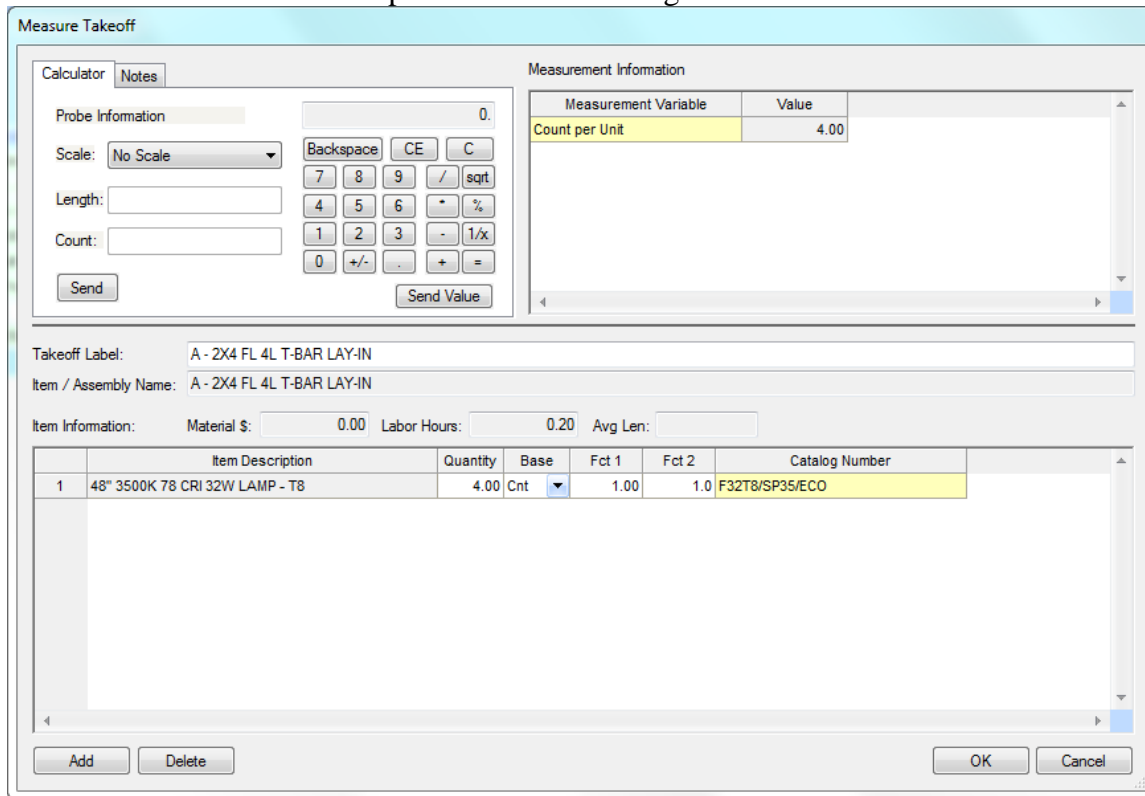


Figure 18

25. Right Click in the Fixture Item List and click  Finish

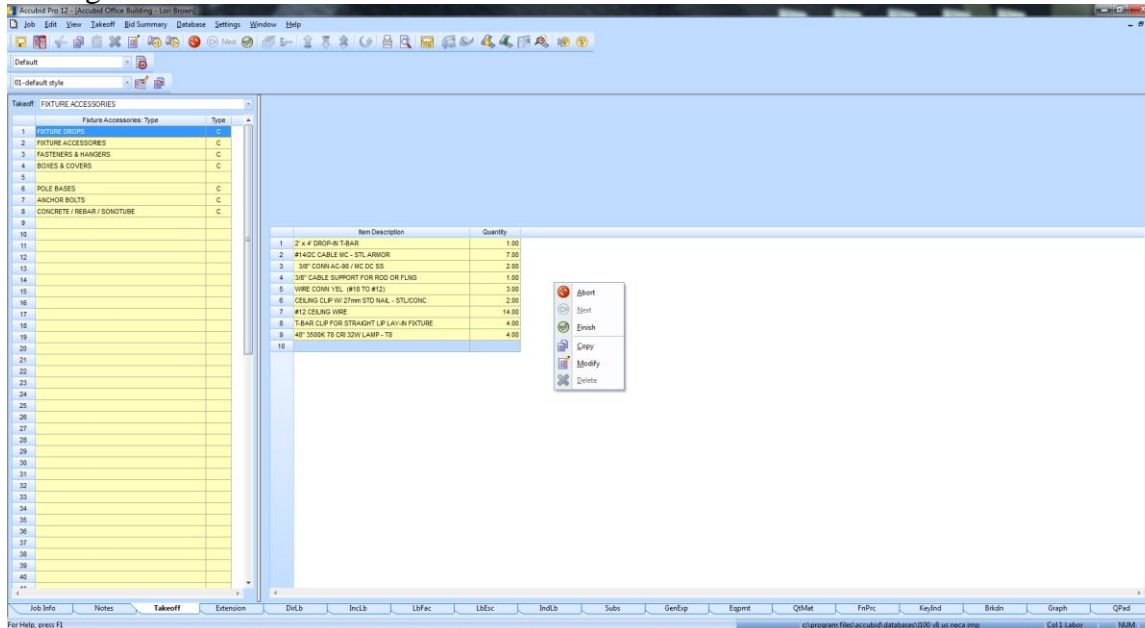


Figure 19

The completed Fixture Designation displays in the Takeoff: Fixtures designation list on Line 1.

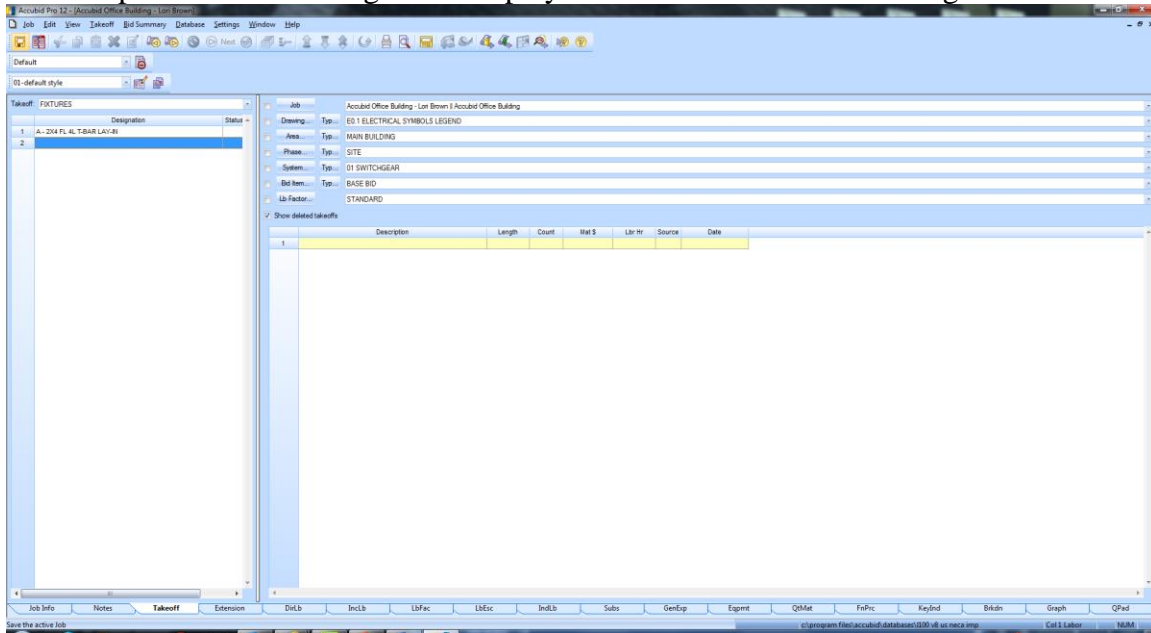


Figure 20

JUST READ. No steps involved.

Note: **If** you double click on the Fixture Designation that is the command to “Takeoff” the Fixture and it brings up the Designation Count Dialog box, Figure 21.

To abort a takeoff click Cancel.

**Never perform a Takeoff without first checking the BREAKDOWN!**

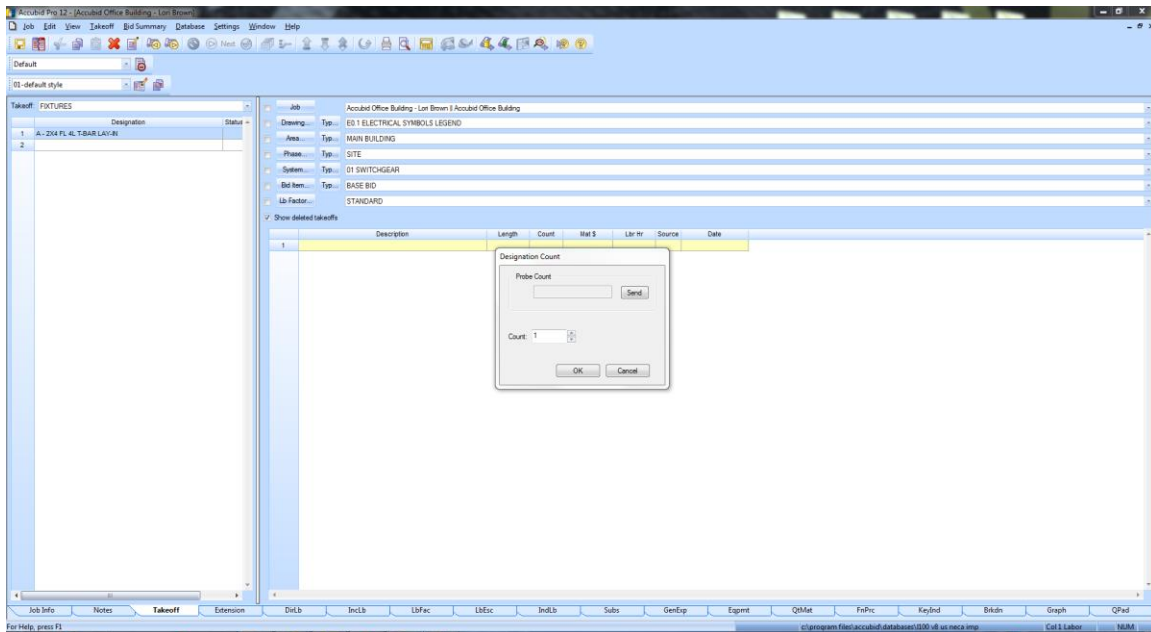



Figure 21

**If** you need to Edit or Change the Fixture Designation you **RIGHT CLICK** on the Fixture Designation name and Select Modify.

**To Build Fixtures A1 and A2 follow these steps:**

26. Right Click on the Fixture Designation: A - 2X4 FL 4L T-BAR LAY-IN and click Copy.
27. Right click on Line 2 and select Paste.
28. Right click on Line 3 and select Paste.
29. Right click on Line 2 and select Modify.
30. Double click on Line 9 in the Item Description box and change the number of Lamps to 3, then click on OK.
31. To finish the changes, you can either click on the  Finish Takeoff button on the Toolbar, or right click on the list of items and select Finish.
32. In the Create/Modify Designation Description box edit the Fixture Designation name to:  
A1 - 2X4 FL 3L T-BAR LAY-IN

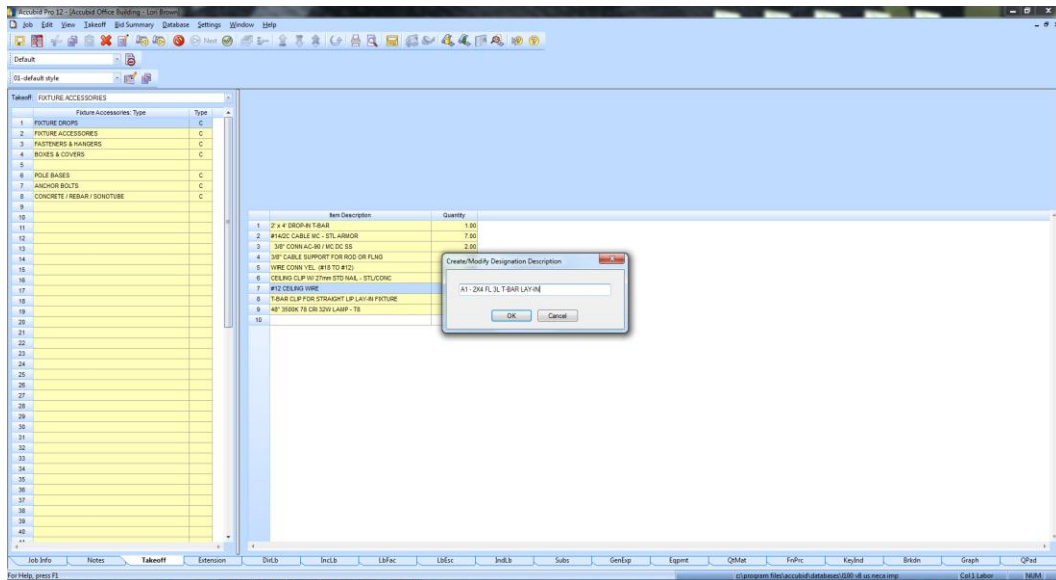


Figure 22

33. Repeat this Procedure to change the number of lamps to 2 for Fixture A2, and rename the Fixture Designation to: A2 - 2X4 FL 2L T-BAR LAY-IN

The Fixture Designation List now displays the three designations.

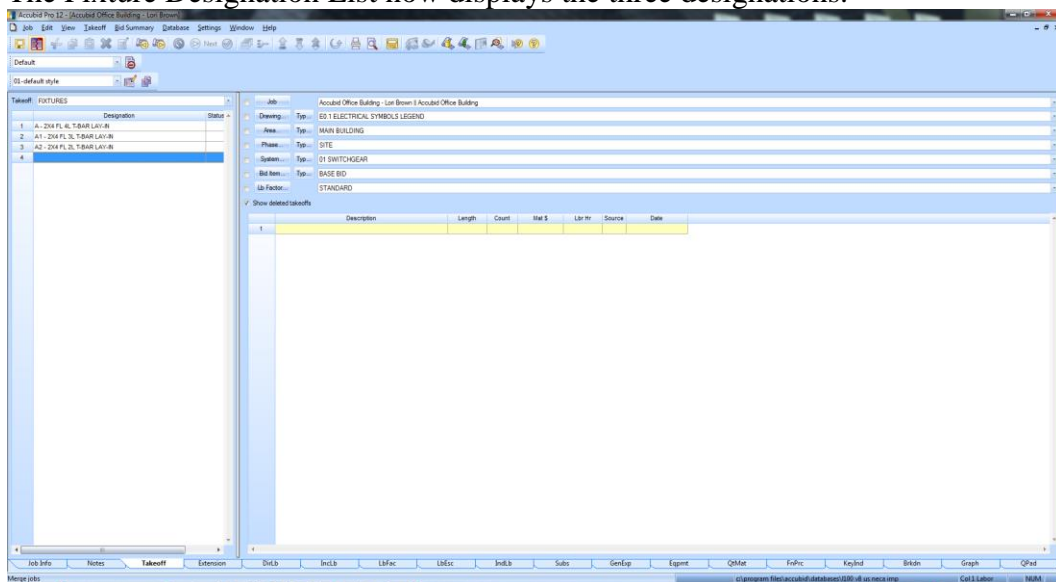


Figure 23

**To create Fixture Designations from already existing “Assemblies” follow these steps:**

34. Double Click on Line 4 to create a new Fixture Designation.
35. In the Create/Modify Designation Description box enter: B – 2X2 FL 2UL T-BAR LAY-IN and click on OK.
36. Click on:  
Fixtures: Category           FLUORESCENT LUMINAIRES (Line 1)  
Fixtures: Type                **FLUORESCENT LUMINAIRES ASSEMBLIES\*\*\* (Line 4)**
37. Double Click on 2' x 2' DROP-IN T-BAR (14/2 WHIP) (Line 2)
38. Click on OK
39. Double Click on LAMPS – T8 U-SHAPED (Line 3)
40. Double Click on 24" 3500K 78 CRI 32W LAMP - T8 6" SPACING (Line 2)
41. Change the Count per Unit value to 2 and click OK.
42. Right click and select Finish. Click OK.

Using the Fixture Designation names shown in Figure 24:

43. Complete building all of the remaining Fixture Designations using:

For FL (Fluorescent) Fixtures:

FLUORESCENT LUMINAIRES (Line 1)

FLUORESCENT LUMINAIRES ASSEMBLIES\*\*\* (Line 4)

For INC (Incandescent) Fixtures:

INCANDESCENT LUMINAIRES (Line 2)

INCANDESCENT LUMINAIRE ASSEMBLIES \*\*\* (Line 11)

For HID (High Intensity Discharge) Fixtures:

HID (High Intensity Discharge) LUMINAIRES (Line 4)

HID LUMINAIRES - ASSEMBLIES \*\*\* (Line 9)

For Exit Light Fixtures:

EMERGENCY & EXIT LUMINAIRES [Line 3]

EXIT & EMERGENCY LIGHTING ASSEMBLIES \*\*\* [Line 5]

Use the Fixture Schedule (E6.1) to locate the correct type and quantity of lamp to add to the designation.

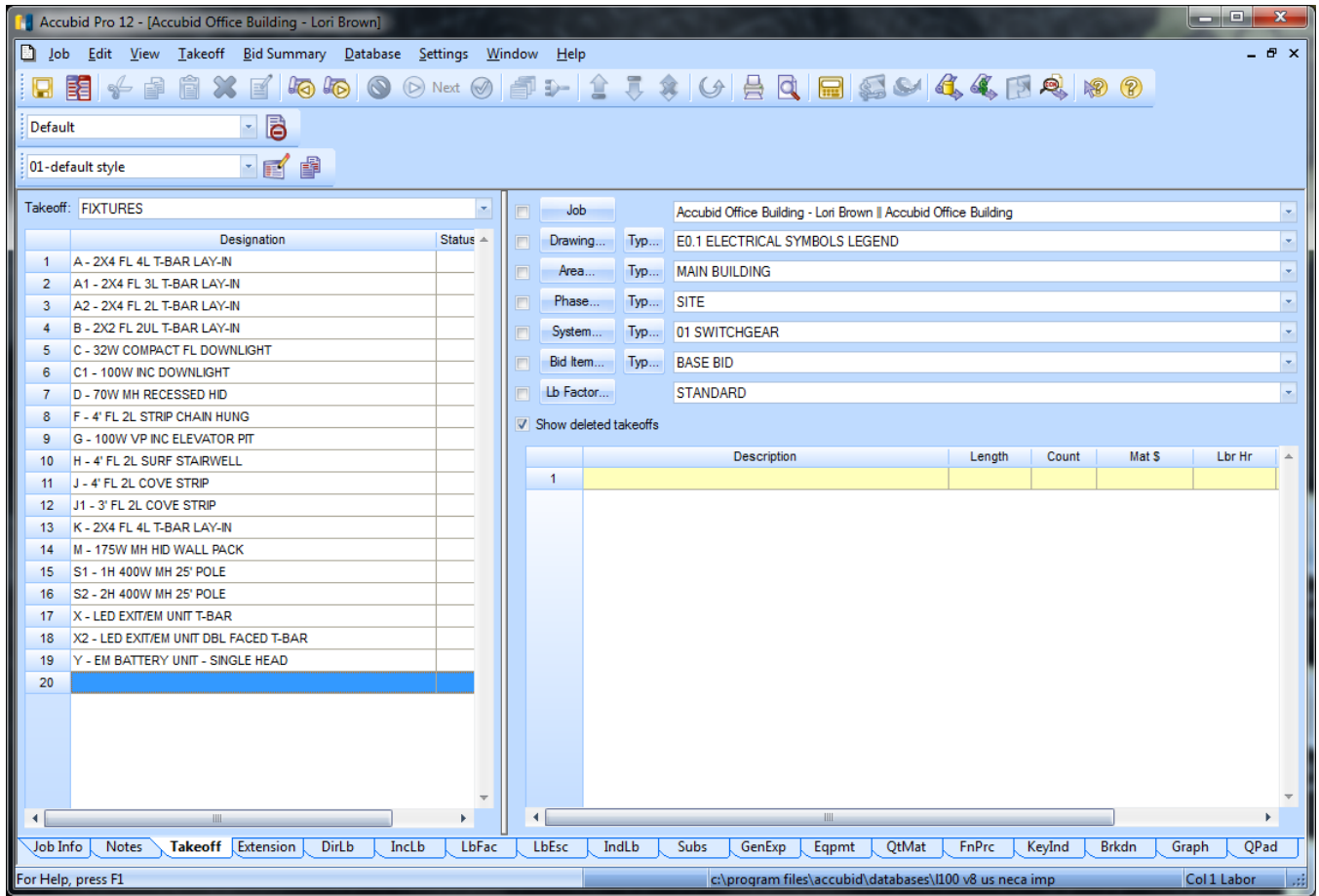


Figure 24

E6.1 – ELECTRICAL LIGHT FIXTURE SCHEDULE

FIXTURE TYPE	DESCRIPTION	VOLTAGE	LAMPS	MANUF. & CATALOG #	FIXTURE TYPE	DESCRIPTION	VOLTAGE	LAMPS	MANUF. & CATALOG #
"A"	2'x4' FLUORESCENT LAY-IN LIGHT FIXTURE, 4-LAMP, 3" DEEP (18) CELL PARABOLIC SPECULAR LOUVER, COLD ROLLED STEEL HOUSING AND DOOR, BAKED WHITE POWDER ENAMEL FINISH, INSTANT START ELECTRONIC BALLAST.	277	(4) 32 WATT (FLUOR.) (F32T8/35K)	COOPER # 2EP3GAX-432S361-277V-18/35-EB81-U	"J1"	SAME AS TYPE "J" EXCEPT 36" IN LENGTH.	277	(2) 26 WATT (FLUOR.) (F26T8/35K)	COOPER # SNL-226-277V-LL4-LBU1-U
"A1"	2'x4' FLUORESCENT LAY-IN LIGHT FIXTURE, 3-LAMP, 3" DEEP (18) CELL PARABOLIC SPECULAR LOUVER, COLD ROLLED STEEL HOUSING AND DOOR, BAKED WHITE POWDER ENAMEL FINISH, INSTANT START ELECTRONIC BALLAST.	277	(3) 32 WATT (FLUOR.) (F32T8/35K)	COOPER # 2EP3GAX-332S361-277V-18/35-EB81-U	"K"	2'x4' FLUORESCENT LAY-IN LIGHT FIXTURE, 4-LAMP, .125" PRISMATIC LENSE, COLD ROLLED STEEL HOUSING, EXTRUDED ALUMINUM DOOR, BAKED WHITE POWDER ENAMEL FINISH, INSTANT START ELECTRONIC BALLAST.	277	(4) 32 WATT (FLUOR.) (F32T8/35K)	COOPER # 2CC-NF-432A125-277V-18/35-EB81-U
"A2"	2'x4' FLUORESCENT LAY-IN LIGHT FIXTURE, 2-LAMP, 3" DEEP (18) CELL PARABOLIC SPECULAR LOUVER, COLD ROLLED STEEL HOUSING AND DOOR, BAKED WHITE POWDER ENAMEL FINISH, INSTANT START ELECTRONIC BALLAST.	277	(2) 32 WATT (FLUOR.) (F32T8/35K)	COOPER # 2EP3GAX-232S361-277V-18/35-EB81-U	"M"	METAL HALIDE WALL PACK LIGHT FIXTURE, DIE-CAST ALUMINUM ONE-PIECE HOUSING AND DOOR FRAME, CLEAR, PRISMATIC LENS, WIDE FLOOD DISTRIBUTION, POWDER COAT FINISH (COLOR BY ARCH.), FULLY GASKETED, WET LOCATION LISTED. PROVIDE WITH COLD WEATHER MULTI-TAP HPF BALLAST.	277	(1) 175 WATT (M.H.)	COOPER # 2CC-NF-432A125-277V-18/35-EB81-U
"B"	2'x2' FLUORESCENT LAY-IN LIGHT FIXTURE, 2-LAMP, 3" DEEP (9) CELL PARABOLIC SPECULAR LOUVER, COLD ROLLED STEEL HOUSING AND DOOR, BAKED WHITE POWDER ENAMEL FINISH, INSTANT START ELECTRONIC BALLAST.	277	(2) 32 WATT (FLUOR.) (F32T8/35K)	COOPER # 2EP3GAX-232S361-277V-18/35-EB81-U	"S"	METAL HALIDE BOLLARD LIGHT FIXTURE, DIE-CAST ALUMINUM ONE-PIECE HOUSING, CLEAR, POLYCARBONATE LENS, POWDER COAT FINISH (COLOR BY ARCH.), FULLY GASKETED, WET LOCATION LISTED. PROVIDE WITH COLD WEATHER MULTI-TAP HPF BALLAST.	277	(1) 50 WATT (M.H.)	GREENLEE # ABS-50MH-MT-277V-EL-BLK-PT
"C"	6"Ø RECESSED COMPACT FLUORESCENT DOWNLIGHT, 5 11/16" APERTURE, SPECULAR CLEAR LOW IRIDESCENT REFLECTOR, WHITE POLYMER TRIM RING, INSTANT START ELECTRONIC BALLAST.	277	(1) 32W TRIPLE (COMP. FLUOR.) (4-PIN/35K)	COOPER # C60321E-6050U-277V	"S1"	SINGLE HEAD AREA LUMINAIRE (RECTANGULAR), ONE-PIECE DIE-CAST HOUSING AND DOOR FRAME, CLEAR GLASS LENS, HYDROFORMED ALUMINUM REFLECTOR (TYPE III DISTRIBUTION), BLACK POWDER COAT FINISH, FULLY GASKETED, U.L. LISTED WET LOCATION. PROVIDE WITH MOUNTING ARM, HORIZONTAL LAMP, MOUNTED ON A 25' BLACK ROUND TAPERED STEEL POLE ON A 3' ABOVE GRADE CONCRETE BASE. CONNECT AT 277 VOLTS.	277	(1) 400 WATT (Mogul Base M.H.)	FIXTURE: COOPER # MHHR-R3-400MH-MT-277V-BLK-M59PJ-400/UGF w/OA1064C001
"C1"	5 3/4"Ø RECESSED INCANDESCENT DOWNLIGHT, 4 7/16" APERTURE, SPECULAR CLEAR LOW IRIDESCENT REFLECTOR, WHITE POLYMER TRIM RING.	120	(1) 100W (INC.)	COOPER # HD4-4510L-120V	"S2"	SAME AS TYPE "S1" EXCEPT w/ (2) HEAD CONFIGURATION (180° ORIENTATION/SEPARATION).	277	(2) 400 WATT (Mogul Base M.H.)	FIXTURE: COOPER # MHHR-R3-400MH-MT-277V-BLK-M59PJ-400/UGF w/OA1064C002
"C2"	5"Ø RECESSED INCANDESCENT LOW VOLTAGE DOWNLIGHT, 1 7/8" Ø OPEN COU FX APERTURE, BLACK RAFFIA, WHITE POLYMER TRIM RING, DUAL TAP INTEGRAL MAGNETIC STEP-DOWN TRANSFORMER (120V TO 12V).	120	(1) 75W (MR16 INC.)	COOPER # H149175-1419-120V-P	"X"	SINGLE FACE UNIVERSAL MOUNTED "LED" EXIT SIGN, CAST ALUMINUM HOUSING AND DOOR FRAME, RED LETTERS AND CHEVRONS, DIRECTIONAL CHEVRON ARROWS AS INDICATED ON DWGS., INSTANT START EMERGENCY BALLAST.	277	INCLUDED (LED)	COOPER # CX-7-1-70-R-D-277V
"D"	8"Ø RECESSED METAL HALIDE DOWNLIGHT, 8 1/2" APERTURE, SPECULAR CLEAR LOW IRIDESCENT REFLECTOR, BLACK BAFFLE AND WHITE TRIM RING, HPF BALLAST.	277	(1) 70W (M.H.)	COOPER # M6024T-740-10002P-MP100/U/MED-277V	"X2"	DOUBLE FACE UNIVERSAL MOUNTED "LED" EXIT SIGN, CAST ALUMINUM HOUSING AND DOOR FRAME, RED LETTERS AND CHEVRONS, DIRECTIONAL CHEVRON ARROWS AS INDICATED ON DWGS., INSTANT START EMERGENCY BALLAST.	277	INCLUDED (LED)	COOPER # CX-7-2-70-R-D-277V
"E"	1'x4' SUSPENDED STRIP FLUORESCENT LIGHT FIXTURE, 2-LAMP, COLD ROLLED STEEL HOUSING, BAKED WHITE POWDER ENAMEL FINISH, INSTANT START ELECTRONIC BALLAST. PROVIDE w/ CHAIN SET AND WIRE GUARD.	277	(2) 32 WATT (FLUOR.) (F32T8/35K)	COOPER # SS-232-277V-EB81-U w/ AYC-CHAIN/SET-U & WG/SS-4FT-U	"Y"	4 3/4" SURFACE INCANDESCENT SINGLE HEAD LUMINAIRE <RECTANGULAR> ONE-PIECE THERMOPLASTIC HOUSING, WHITE FINISH, C/W BATTERY.	277	(1) 4V BI-PIN HALOGEN LAMP	COOPER # MML
"G"	WALL MOUNTED INCANDESCENT ELEVATOR PIT LIGHT FIXTURE, MATTE BLACK FINISH, 120V, U.L. LISTED FOR WET LOCATION. PROVIDE w/ OPAL GLASS CYLINDER LENS AND WIRE GUARD.	120	(1) 100W A19 (INCAND.)	HALO # H2411-MB-120V w/WG11					
"H"	8"x48" FLUORESCENT SURFACE MOUNTED LIGHT FIXTURE, 2-LAMP, CLEAR ACRYLIC PRISMATIC LENS, COLD ROLLED STEEL HOUSING AND DOOR, BAKED WHITE POWDER ENAMEL FINISH, INSTANT START ELECTRONIC BALLAST.	277	(2) 32 WATT (FLUOR.) (F32T8/35K)	COOPER # BI-232-277V-EB81-U					
"J"	2 3/4"x48" NARROW STAGGERED FLUORESCENT SURFACE MOUNTED LIGHT FIXTURE, 2-LAMP, COLD ROLLED STEEL HOUSING AND DOOR, BAKED WHITE POWDER ENAMEL FINISH, INSTANT START ELECTRONIC BALLAST.	277	(2) 32 WATT (FLUOR.) (F32T8/35K)	COOPER # SNL-232-277V-EB81-U					

## Printing Fixture Designations

1. Select Takeoff: FIXTURES.
2. Click on the Job menu and click on the Print command.
3. Uncheck Use screen layout
4. Click Clear All.
5. Place a check in the Job Info box.
6. Click on the plus sign next to Designations and select the Current Designation List radio button.
7. Click on Setup... and select Portrait for the Orientation of the printout.
8. Click Print.

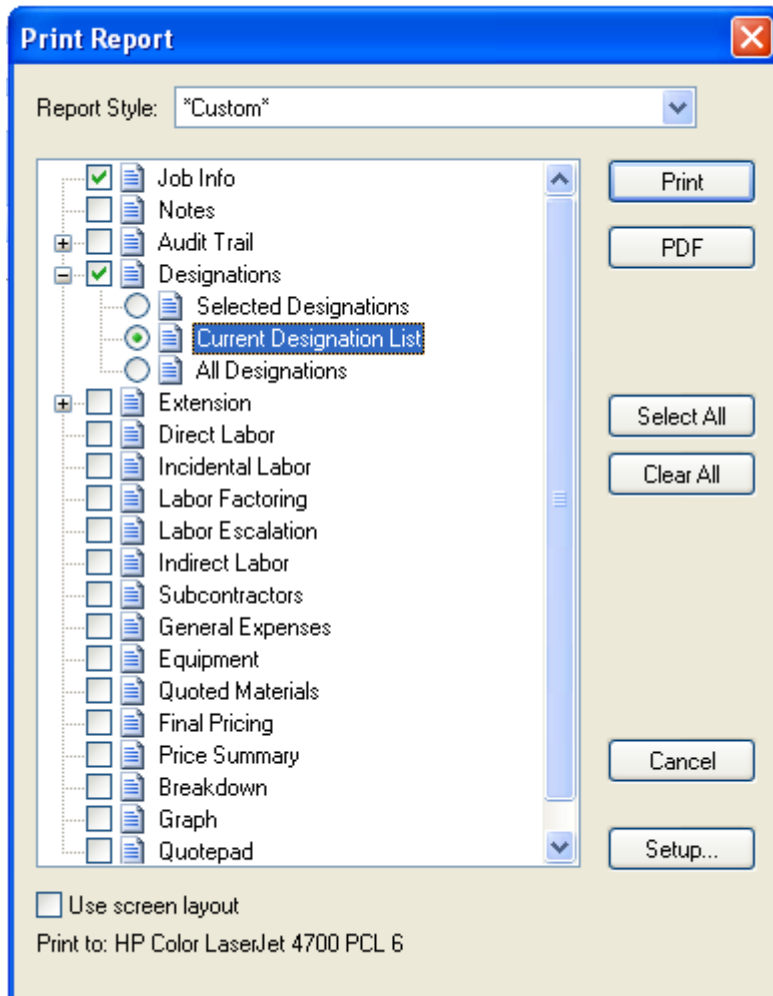


Figure 25

Once all of the Fixture Designations have been built, the estimator is now ready to begin entering the quantities of each fixture type (designation). Typically, light fixtures counts are entered by Drawing, Phase (floor) and by System.



## Fixture Takeoff

1. Complete the 06 FIXTURES takeoff (count) using the takeoff sheet provided in class.  
**Note: Set the correct Breakdown Labels BEFORE taking off the fixtures.**
2. For Example, to takeoff the Fixture A1 on the First Floor set the breakdown as shown in Figure 26.

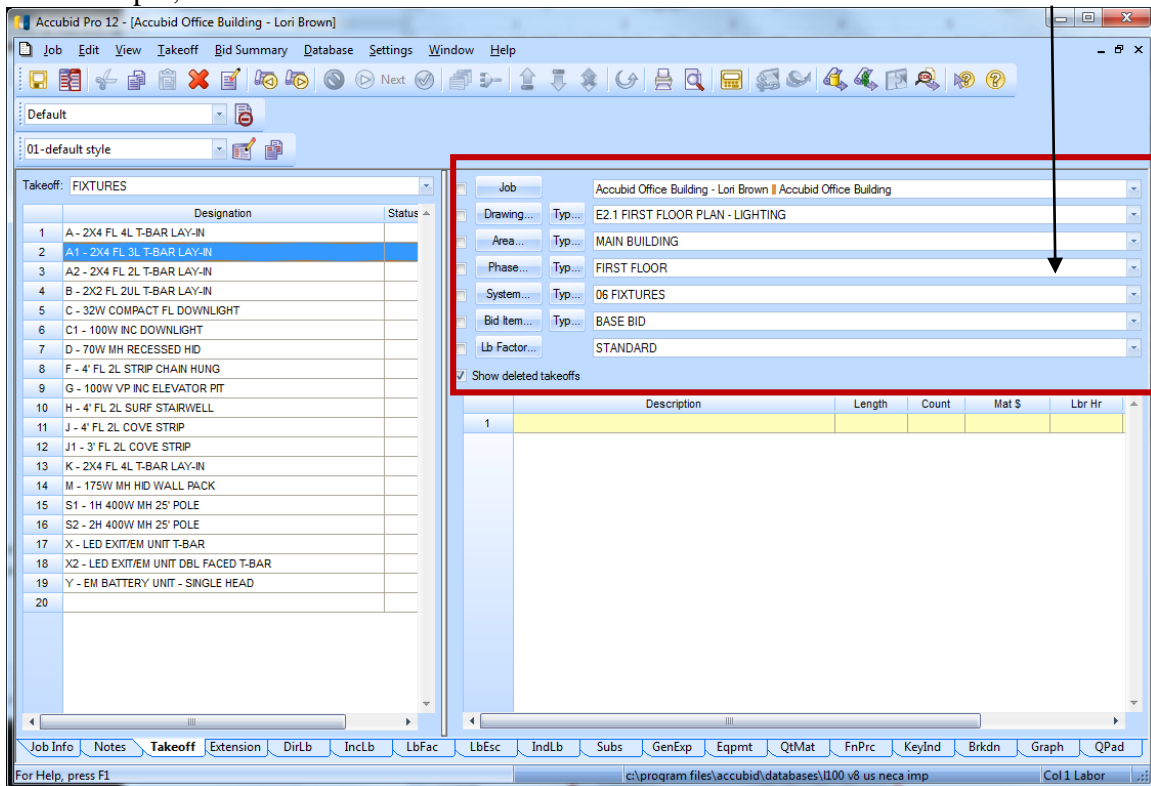


Figure 26

3. Double click on the fixture designation: Line 2 A1 – 2x4 FL 3L T-BAR LAY-IN
4. Enter in the quantity in the Designation Count window and click on OK.

The take-off appears in the Audit Trail Description area.

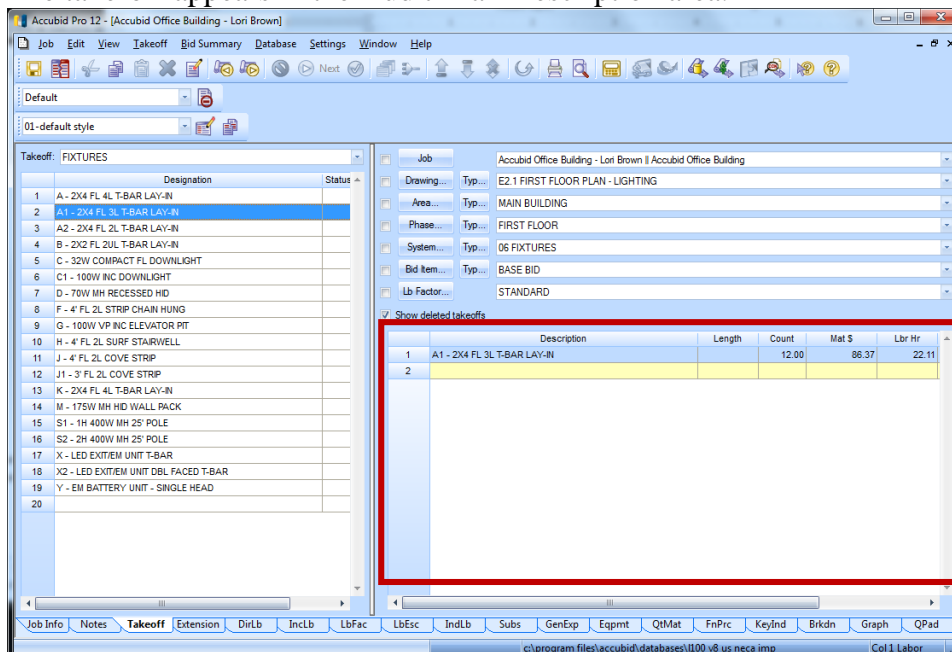


Figure 27

- Using the 06 FIXTURES take-off sheet, take off your fixture counts for E2.0 BASEMENT FLOOR PLAN - LIGHTING and E2.1 FIRST FLOOR PLAN – LIGHTING under the correct Breakdown labels. After entering the fixture count in Accubid, using a red pencil, line through the fixture count on your take-off sheet. To complete the takeoff for E2.2 TYPICAL FLOOR PLAN (2ND TO 4TH) – LIGHTING see below.

### Performing Fixture Takeoff Using Typical (Typ...)

The Typical takeoff can be used when an estimate has repetitive takeoff, for example, fixtures are the same for each floor.

- To create the **Typical** label click the **Typ...** button next to the **Phase...** button.

Job	ACCUBID OFFICE BUILDING - LAB    ACCUBID OFFICE BUILDING
Drawing...	Typ... E2.1 FIRST FLOOR PLAN - LIGHTING
Area...	Typ... MAIN BUILDING
Phase...	Typ... FIRST FLOOR
System...	Typ... 06 FIXTURES
Bid Item...	Typ... BASE BID
Lb Factor...	STANDARD

Show deleted takeoffs

Figure 28

The Typical Phase Modify Window opens.

Count	Phase Description
1	SITE
2	BASEMENT
3	FIRST FLOOR
4	SECOND FLOOR
5	THIRD FLOOR
6	FOURTH FLOOR
7	ROOF
8	RISER

Figure 29

- Modify the dialog box as shown in Figure 30 and click Close.

Count	Phase Description
1	SITE
2	BASEMENT
3	FIRST FLOOR
4	1.0 SECOND FLOOR
5	1.0 THIRD FLOOR
6	1.0 FOURTH FLOOR
7	ROOF
8	RISER

Since the fixture takeoff repeats itself on different floors, called phases, a count value must be entered for each of the Phase Descriptions (floors) that include fixtures.

Enter in 1.0 in the count field for floors 2, 3, 4.

Figure 30

Example:

- To Take-Off Fixture A for E2.2 TYPICAL FLOOR PLAN (2ND TO 4TH) - LIGHTING in the Phase Breakdown Label select: Typical-FLOORS 2-3-4 as shown in Figure 31.

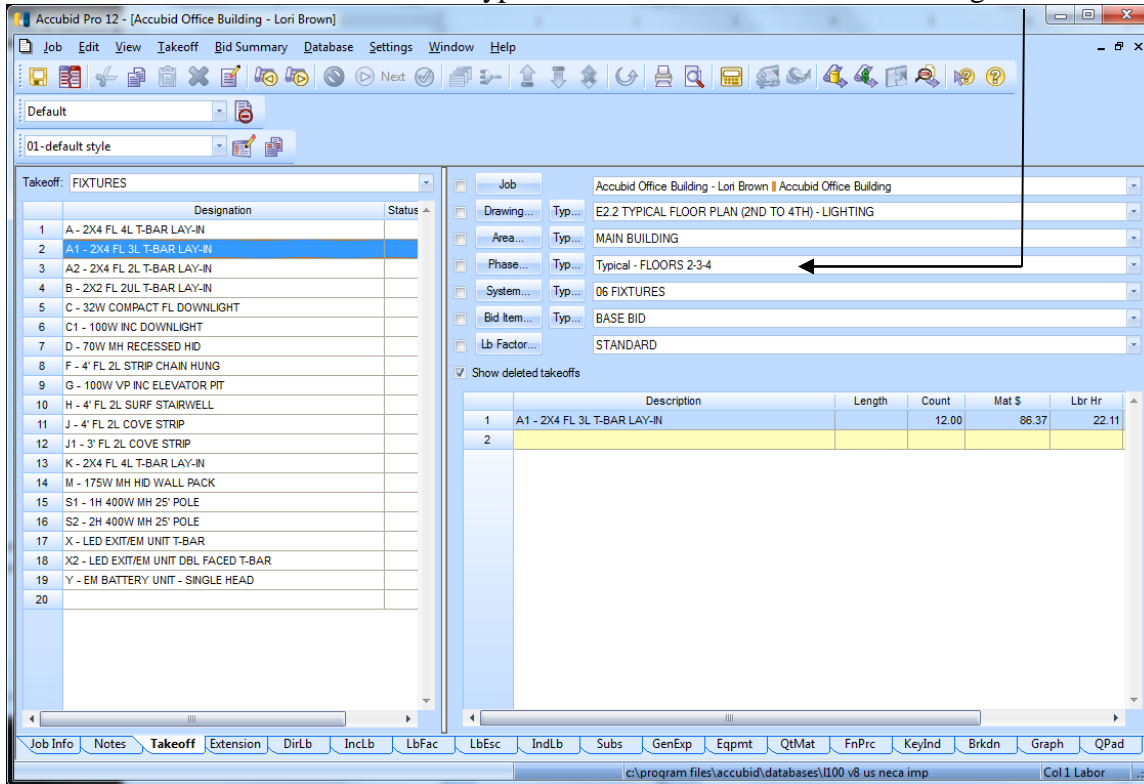


Figure 31

Once the typical phase is selected, everything taken off under this Phase will be multiplied by 3, once for floor 2, 3, and 4.

### Accubid Extension Screen

The complete take off can be seen by viewing the Extension screen. The Extension screen will contain no items until you start taking things off.

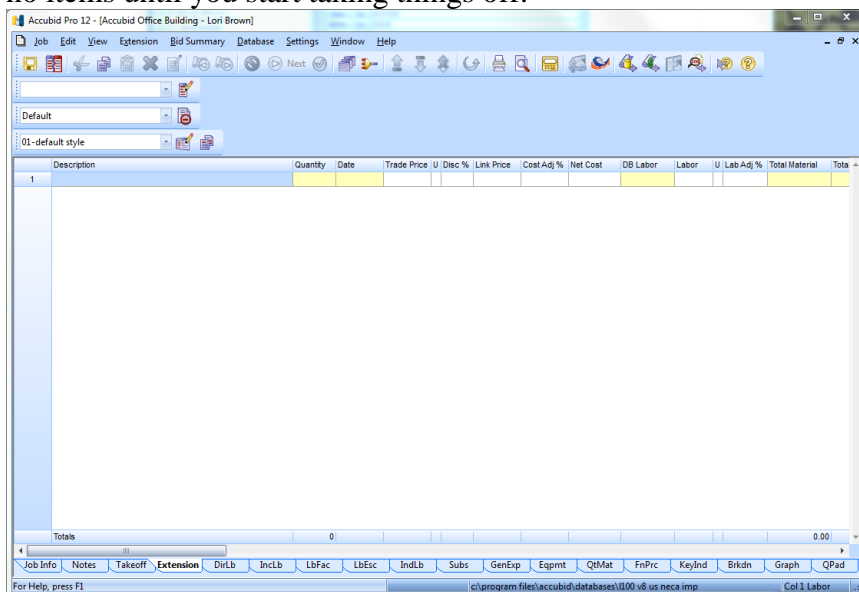


Figure 32

9. Click on the Extension tab to access the screen
10. Verify the Fixture takeoff by checking the total number of each Fixture added to the estimate in the Extension screen.

The screenshot shows the 'Accubid Pro 12 - [AOB ACT\_2]' window with the 'Extension' tab selected. The table below represents the data shown in the software's fixture takeoff screen.

	Description	Quantity	Date	Trade Price	U	Disc %	Link Price	Cost Adj %	Net Cost	DB Labor	Labor	U	Lab Adj %	Total Material	Total
1	A - 2X4 FL 4L T-BAR LAY-IN	181	11/25/2003								0.60				
2	A1 - 2X4 FL 3L T-BAR LAY-IN	12	11/25/2003			E					0.60	E			
3	A2 - 2X4 FL 2L T-BAR LAY-IN	45	11/25/2003			E					0.60	E			
4	B - 2X2 FL 2UL T-BAR LAY-IN	37	11/25/2003			E					0.55	E			
5	C - 32W COMPACT FL DOWNLIGHT	93	11/25/2003			E					0.60	E			
6	C1 - 100W INC DOWNLIGHT	9	11/25/2003			E					0.65	E			
7	D - 70W MH RECESSED HD	9	11/25/2003			E					0.90	E			
8	F - 4' FL 2L STRIP CHAIN HUNG	45	11/25/2003			E					0.40	E			
9	G - 100W VP INC ELEVATOR PIT	1	3/28/2007			E					0.60	E			
10	H - 4' FL 2L SURF STAIRWELL	18	11/25/2003			E					0.75	E			
11	J - 4' FL 2L COVE STRIP	20	11/25/2003			E					0.40	E			
12	J1 - 3' FL 2L COVE STRIP	8	11/25/2003			E					0.35	E			
13	K - 2X4 FL 4L T-BAR LAY-IN	6	11/25/2003			E					0.60	E			
14	M - 175W MH HD WALL PACK	4	11/25/2003			E					1.00	E			
15	X - LED EXIT/EM UNIT T-BAR	19	11/25/2003			E					0.75	E			
16	X2 - LED EXIT/EM UNIT DBL FACED T-BAR	14	11/25/2003			E					0.75	E			
17	Y - EM BATTERY UNIT - SINGLE HEAD	38	11/25/2003			E					1.20	E			
18	1/2" CONDUIT - EMT	400	12/13/2006	39.08	C	35.00			25.40		2.88	C		101.60	
19	1/2" CONN SS DC - EMT	76	11/22/2006	66.24	C	20.00			52.99		8.00	C		40.27	
20	1/2" CONN SS STL - EMT	2	11/22/2006	122.63	C	20.00			98.10		8.00	C		1.96	
21	1/2" COUPLING SS STL - EMT	1	11/22/2006	162.72	C	20.00			130.18			C		1.30	
22	1/2" 1-H STRAP - EMT - STEEL	76	11/22/2006	25.03	C	20.00			20.02		4.90	C		15.22	
23	1/2" CONDUIT SUPPORT FOR ROD OR FLNG	33	7/12/2006	26.44	C	10.00			23.80		4.60	C		7.85	
24	1/2" FLEX - ALUMINUM	231	9/6/2006	55.72	C	20.00			44.58		3.00	C		102.98	
25	1/2" CONN FLEX DC CONDUIT STRAIGHT	66	11/22/2006	176.00	C	20.00			140.80		16.00	C		100.00	
	<b>Totals</b>	<b>18,224</b>												<b>3,964.04</b>	

Figure 33

11. Save your estimate.
12. Close Accubid when you have finished the Fixture Takeoff.
13. Be sure to copy your estimate file to your own USB drive before leaving the lab.