

# CM 352 – Electrical Construction Estimating

## Accubid Activity #8

### Accubid Office Building – SYS 05 MOTOR BR. BRANCH /EQUIP CONNECT

#### Procedure

1. Prepare the MOTOR BRANCH TAKE OFF SHEET and measure and record the length (LFT/T/90°) of each conduit listed on the MOTOR BRANCH TAKE OFF SHEET.

#### Copying Take Off from One Estimate to Another

Accubid allows users to copy takeoff from one estimate to another.

To copy the 05 MOTOR BR. BRANCH/EQUIP CONNECT takeoff from the estimate **Accubid Office Building – MOTORS** to **YOUR** estimate complete the following steps:

1. Obtain a copy of the **Accubid Office Building – MOTORS** from <http://lorisweb.com/cmgt352.html>  
To save the file to your hard drive or USB drive right click on the file name **Accubid Office Building – MOTORS** and select save target as.  
**Copy the file to C:\Program Files\Accubid data\JOBDATA folder on your computer's hard drive.**
2. Start Accubid and open the Job: Accubid Office Building – MOTORS.
3. Setup Accubid to display the entire audit trail by un-checking all the Breakdown filter check boxes as shown in Fig. 1.
4. Select the entire list of takeoff in the Audit Trail Description list by clicking on Line 1, press and hold down the shift key, and press the down arrow until all takeoff is highlighted.
5. Release the Shift key.
6. Right click and select Copy. (This copies all of the selected takeoff to the Windows clipboard.)
7. Close the estimate and open your estimate: Accubid Office Building – *your initials*

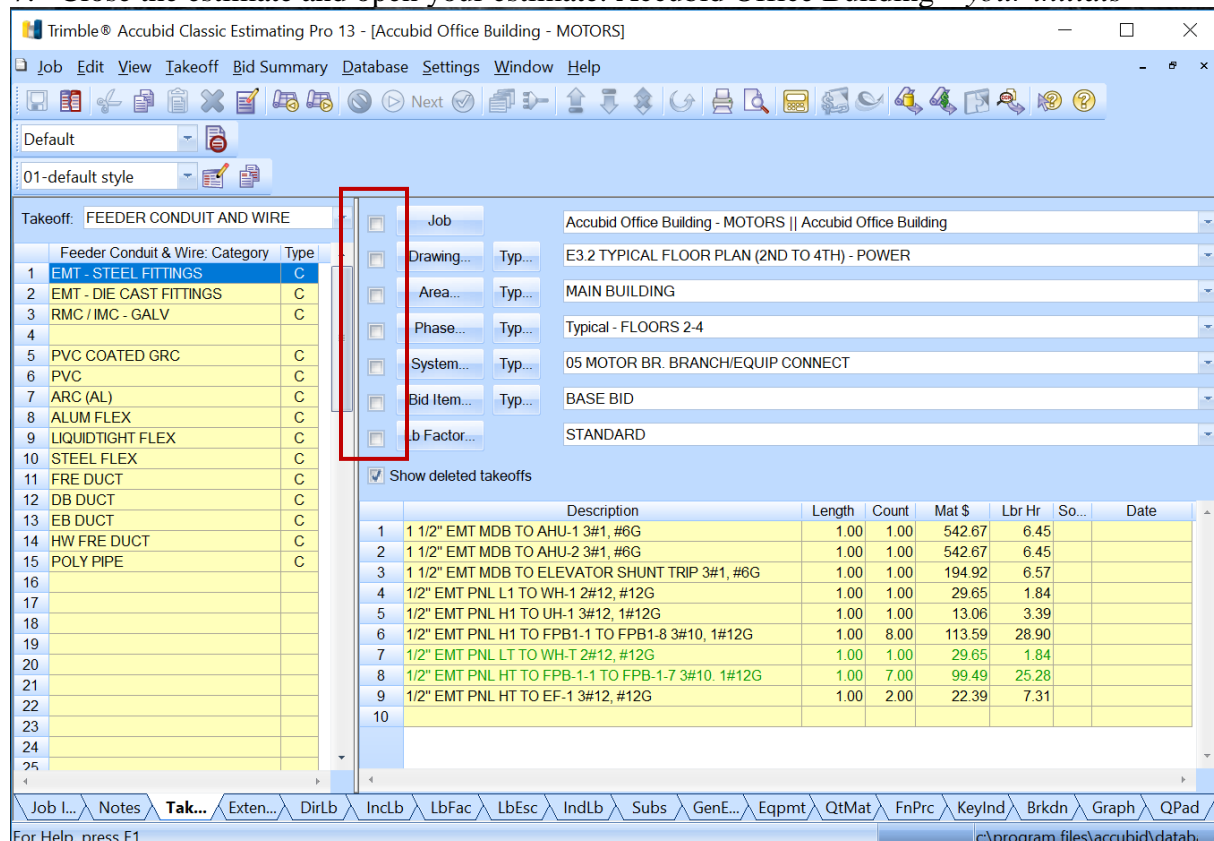


Fig. 1

8. Change the Breakdown as follows:

**Breakdown**

DRAWING: E3.0 BASEMENT FLOOR PLAN - POWER  
PHASE: BASEMENT  
SYSTEM: 05 MOTOR BR. BRANCH/EQUIP CONNECT  
Lb FACTOR: STANDARD

9. Right click in the Audit Trail Description box and select Paste.

10. In the Paste Takeoffs dialog box under Breakdown Options select “Retain all settings” and leave all other boxes unchecked as shown in Fig. 2 and click OK.

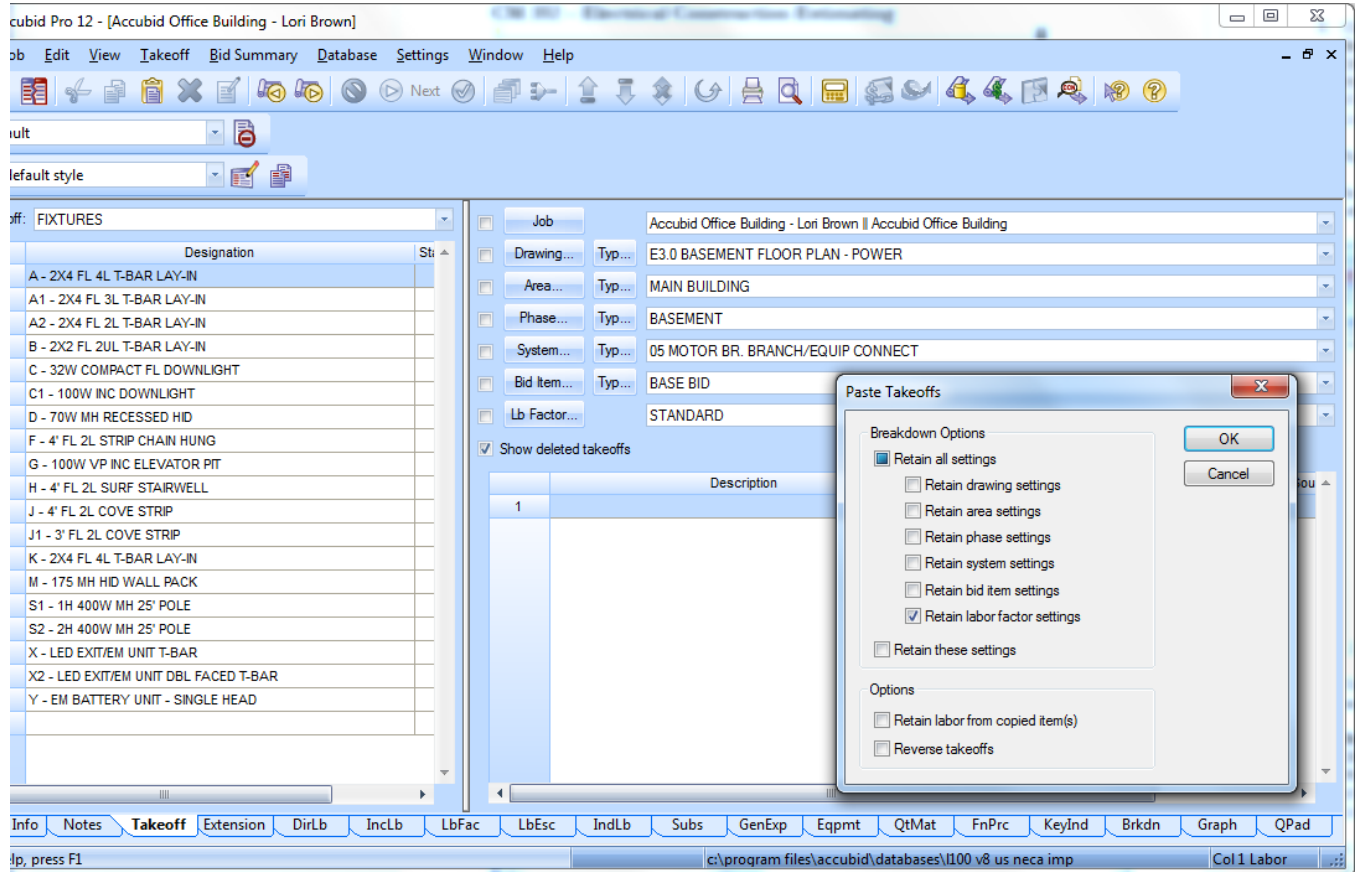


Fig. 2

11. Using the **Change Breakdown** command (Right Click on the Take Off in the audit description list) move the takeoff to the correct Breakdown.

**Breakdown**

DRAWING: E3.0 BASEMENT FLOOR PLAN - POWER  
PHASE: BASEMENT  
SYSTEM: 05 MOTOR BR. BRANCH/EQUIP CONNECT  
Lb FACTOR: STANDARD

- 1 1/2" EMT MDB TO DISC. SW. - AHU-1 3#1, #6G
- 1 1/2" EMT MDB TO DISC. SW. - AHU-2 3#1, #6G
- 1/2" EMT MDB TO ELEVATOR SHUNT TRIP 3#1, #6G

**Breakdown**

DRAWING: E3.1 FIRST FLOOR PLAN - POWER  
PHASE: FIRST FLOOR  
SYSTEM: 05 MOTOR BR. BRANCH/EQUIP CONNECT  
Lb FACTOR: STANDARD

1/2" EMT PNL H1 TO WH-1 3#12  
1/2" EMT PNL H1 TO UH-1 3#12, 1#12G  
1/2" EMT PNL H1 TO FPB1-1 TO FPB1-8 3#10, 1#12G

**Breakdown**

DRAWING: E3.3 ROOF PLAN - POWER  
PHASE: FOURTH FLOOR  
SYSTEM: 05 MOTOR BR. BRANCH/EQUIP CONNECT  
Lb FACTOR: STANDARD

1/2" EMT PNL HT TO EF-1 3#12, #12G

**Breakdown**

DRAWING: E3.2 TYPICAL FLOOR PLAN (2ND TO 4TH) – POWER  
PHASE: Typical – FLOORS 2-4  
SYSTEM: 05 MOTOR BR. BRANCH/EQUIP CONNECT  
Lb FACTOR: STANDARD

1/2" EMT PNL HT TO WH-T 3#12  
1/2" EMT PNL HT TO FPB-1-1 TO FPB-1-7 3#10. 1#12G

12. Edit the length of each of the Motor Branch Conduits using the values recorded on your MOTOR BRANCH TAKE OFF SHEET.
13. Color your plans and red line your take off sheet!
14. Save your estimate.