



BVS-1/2" - Stock No. 1010150

BVS-3/4" - Stock No. 1010175

BVS-1" - Stock No. 1010200

UL and CSFM Listed

Dimensions:

BVS-1/2" - 4.8" L x 2.6" W x 5.5" H
12.0cm L x 6.6cm W x 14.0cm H

BVS-3/4" - 4.8" L x 2.6" W x 6.0" H
12.0cm L x 6.6cm W x 15.2cm H

BVS-1" - 4.8" L x 2.6" W x 5.5" H
12.0cm L x 6.6cm W x 15.9cm H

Weight: BVS-1/2" - 2.25 lbs. (1.0 kg.)

BVS-3/4" - 2.75 lbs. (1.26 kg.)

BVS-1" - 3.50 lbs. (1.6 kg.)

Enclosure: Die-cast zinc, red enamel finish
(All parts plated to resist corrosion)

Conduit Entrance: One opening for non-threaded
1/2" conduit provided

Contact Ratings: Two sets of SPDT (Form C)
15.0 Amps at 125/250VAC
2.50 Amps at 30VDC resistive

Environmental Specifications:

- Indoor or outdoor use
- Temperature range: 40°F/140°F (4.5°C/60°C)
- NEMA 4 rated enclosure - when used with proper conduit fittings
- Not for use in hazardous locations

Maximum Pressure: 175 PSI

Pipe Connection: 1/2", 3/4" and 1" Female NPT

Service Use:

BVS-1/2" and BVS-3/4"

Automatic Sprinkler	NFPA-13
One or two family dwelling	NFPA-13D
Residential occupancy up to four stories	NFPA-13R
National Fire Alarm Code	NFPA-72

BVS-1"

One or two family dwelling	NFPA-13D
National Fire Alarm Code	NFPA-72

Cover Tamper: Tamper resistant screws standard. For optional cover tamper switch kit, order Stock No. 0090140

GENERAL INFORMATION

The BVS utilizes a ball valve in conjunction with a switch assembly. The switch assembly is enclosed in a tamper resistant NEMA 4 enclosure. The switch assembly monitors the fully open position of the valve. Two sets of SPDT contacts are provided which will operate when the valve position is altered from an open state.

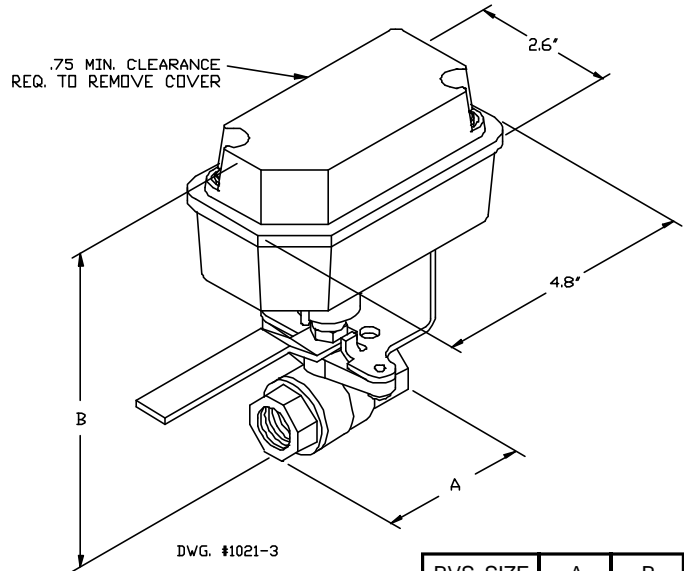
The cover is held in place by two tamper resistant screws that require a special tool to remove. The tool is furnished with each device and should be left with the building owner or responsible party. Replacement or additional cover screws and hex keys are available.

INSTALLATION

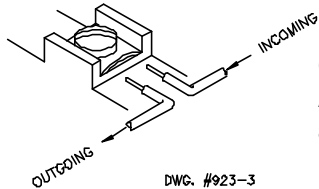
The BVS-1/2" and 3/4" are intended to be installed in the alarm trim line of a wet or dry fire sprinkler system. (They serve as electrically supervised shut-off valves to allow for maintenance or service on alarm attachments, without closing the sprinkler supply valve.)

The BVS-1" is intended to be used as the main control valve in NFPA 13D sprinkler systems, or in any other applications where a 1/4 turn ball valve is acceptable.

For retrofit installations, it is necessary to remove the existing shut-off valve and replace it with the BVS.



SWITCH TERMINAL CONNECTIONS CLAMPING PLATE TERMINAL

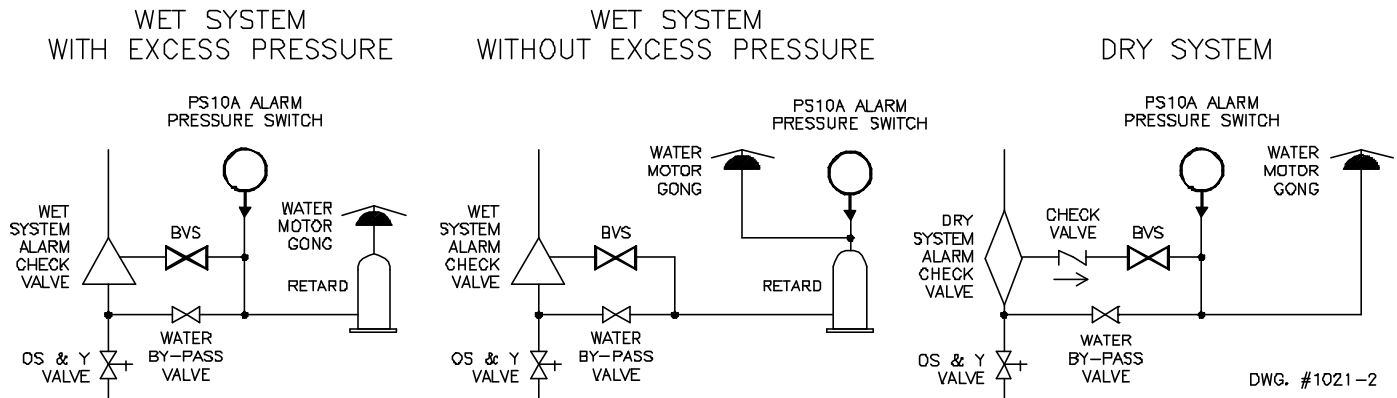


CAUTION:

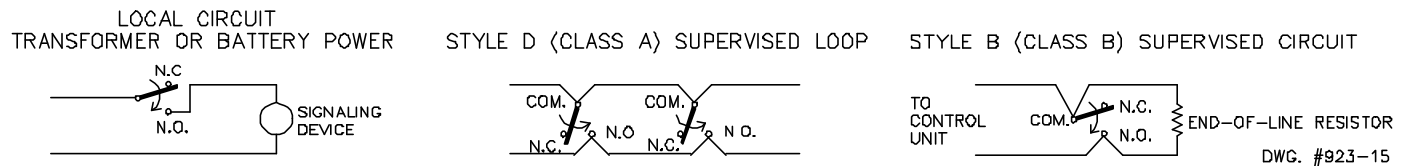
An uninsulated section of a single conductor should not be looped around the terminal and serve as two separate connections. The wire must be severed, thereby providing supervision of the connection in the event that the wire becomes dislodged from under the terminal.

BVS SIZE	A	B
1/2"	2.44"	5.5"
3/4"	2.95"	6.0"
1"	3.34"	6.26"

TYPICAL SPRINKLER APPLICATIONS: BVS-1/2" and BVS-3/4"



TYPICAL ELECTRICAL CONNECTIONS



TESTING

The BVS and its associated protective monitoring system should be inspected and tested in accordance with the applicable NFPA codes and standards and/or the authority having jurisdiction (manufacturer recommends quarterly or more frequently).