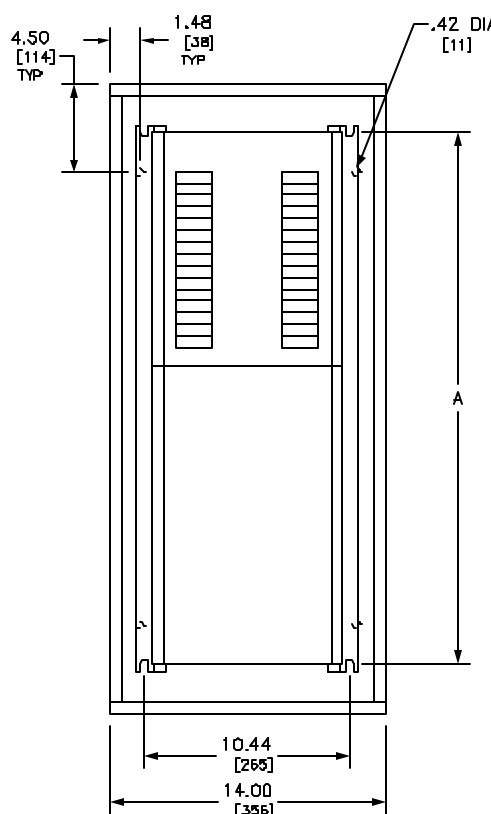
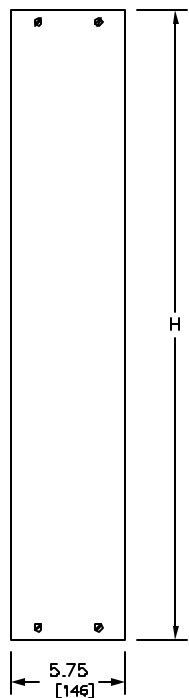


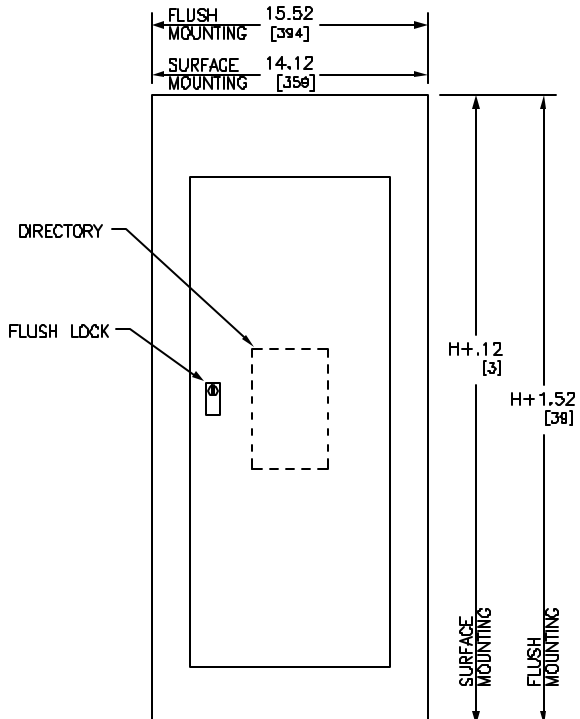
REV	DESCRIPTION	BY	DATE				
---	---	---	---	---	---	---	---



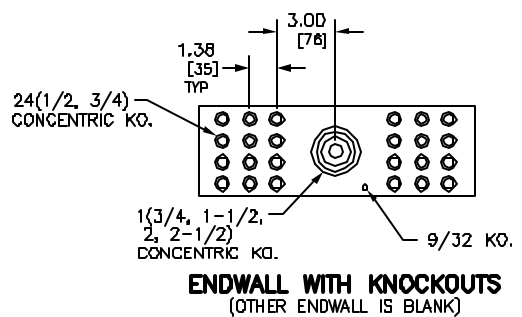
TYPICAL BOX WITH INTERIOR



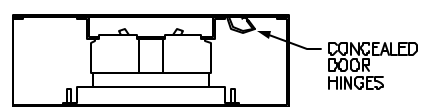
TYPICAL BOX SIDE VIEW



TYPICAL FRONT



ENDWALL WITH KNOCKOUTS
(OTHER ENDWALL IS BLANK)



TYPICAL MOUNTING OF QO, QOB BREAKERS

DUAL DIMENSIONS: INCHES
MILLIMETERS

REFER TO DP CATALOG CLASS 1630 FOR ADDITIONAL INFORMATION

NQOD PANELBOARDS MEET THE APPLICABLE REQUIREMENTS OF UL AND CSA.

BOX: CODE GAUGE GALVANIZED STEEL. ONE ENDWALL IS BLANK. THE OTHER HAS KNOCKOUTS.

FRONT: MONO-FLAT CONSTRUCTION WITH CONCEALED TRIM SCREWS AND DOOR HINGES. ANSI 49 GRAY BAKED ENAMEL FINISH ELECTRODEPOSITED OVER CLEANED PHOSPHATIZED STEEL.

LOCK: FLUSH LOCK WITH BRUSHED, STAINLESS STEEL ESCUTCHEON. NSR-251 KEY CHANGE.

MAXIMUM MAIN LUGS AMPERE RATING	MAXIMUM NUMBER OF CIRCUITS	H		A	
		IN	MM	IN	MM
100	12	20.00	508	15.00	381
	20 24	23.00	584	18.00	457
	30	26.00	660	21.00	533
225	30	32.00	813	27.00	686
	42	35.00	889	30.00	762
	54	41.00	1041	36.00	914
100 WITH SUB-FEED LUGS	12	20.00	508	15.00	381
	20 24	23.00	584	18.00	457
	30	26.00	660	21.00	533
225 WITH SUB-FEED LUGS	30	32.00	813	27.00	686
	42	38.00	965	33.00	838
	54	44.00	1118	39.00	991

* CANADA ONLY

JOB NAME: ---	EQUIPMENT DESIGNATION: ---
JOB LOCATION: ---	EQUIPMENT TYPE: ---
DRAWN BY: ---	DRAWING TYPE: ---
ENGR: ---	
DATE: FEBRUARY 2003	
DRAWING STATUS: ---	DWG# PBA501B

